

# Adelaide Plan No. 107.

Re-Surveyed 4<sup>th</sup> July 1911.

Adelaide University

Exhibition Building

South Aust. School of Mines

FROM R.D.

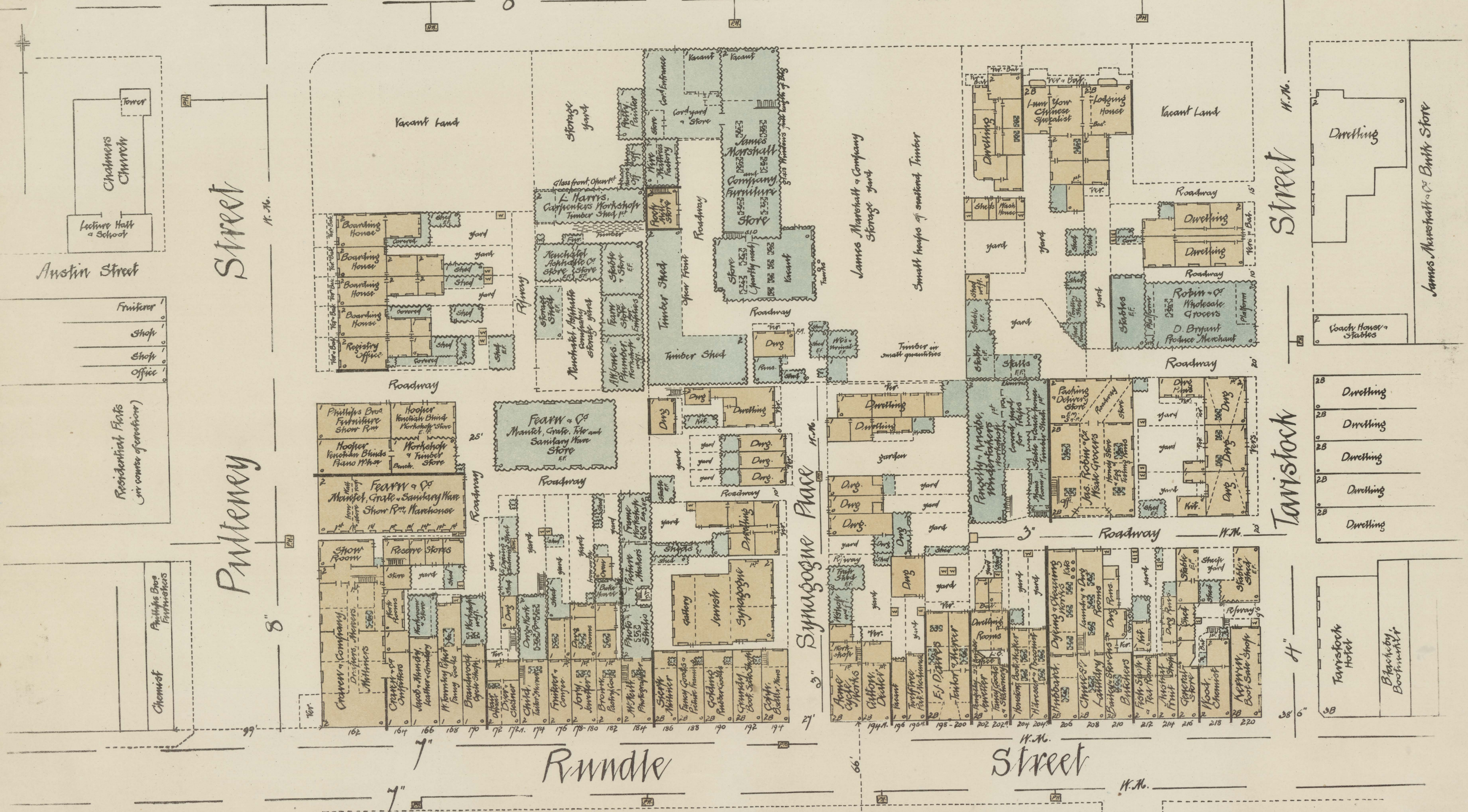
Hospital Grounds

## North

## Terrace

8"

H.M.



### Street

### Penney

### Rundle

### Street

### Street

### Tavistock

### Bent St

Surveyed and Drawn  
for the Fire Underwriters Association  
of South Australia  
by J. R. Ferguson.  
Adelaide 10 July 1911.  
Scale 40 feet to 1 inch.