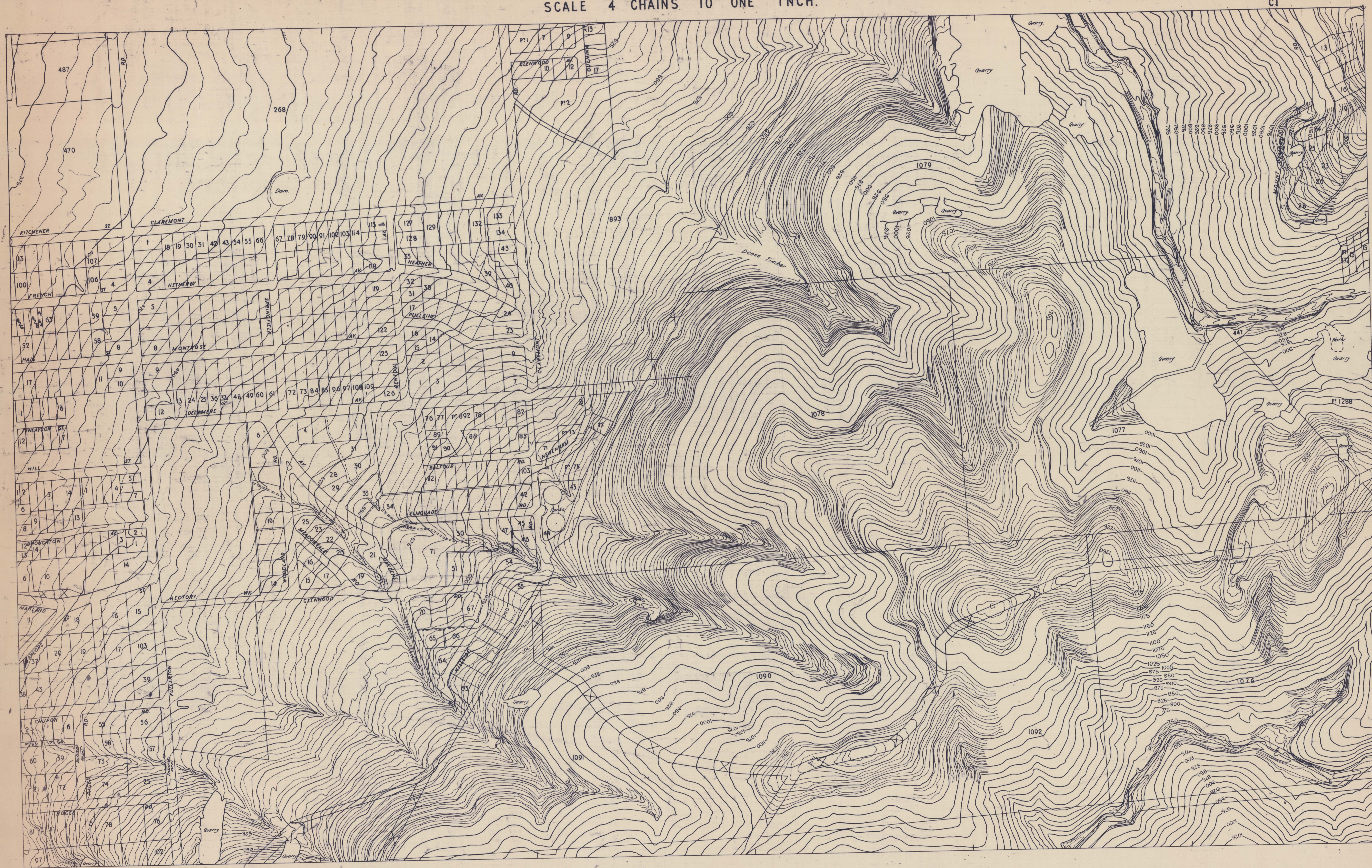


SPRINGFIELD, NETHERBY, ETC.
SCALE 4 CHAINS TO ONE INCH.

ZONE 6
810 C4
C1



This map is prepared in accordance with Standard Specification for Horizontal and Vertical Control and Standards of map Accuracy published by the National Mapping Council Feb. 1953.

Horizontal Check
No point should be more than ± 4 feet from its true position as determined on well defined features.

Vertical Check
Not more than 10% of points checked should be in error by more than $\pm 2\frac{1}{2}$ feet from true elevation and no point more than ± 5 feet from true elevation as determined on well defined features.

Datum of heights 100 feet below L.W.O.S.T.

Prepared in the office of the Surveyor General from aerial photograph film 78 Neg. Nos. 5020 to 5022 & 5041 to 5043 plotted on Wild A5 Autograph.

	ZONE 6 C4 810 C1	
C3 D4	C4 C3	

SPRINGFIELD

810 C4 C1