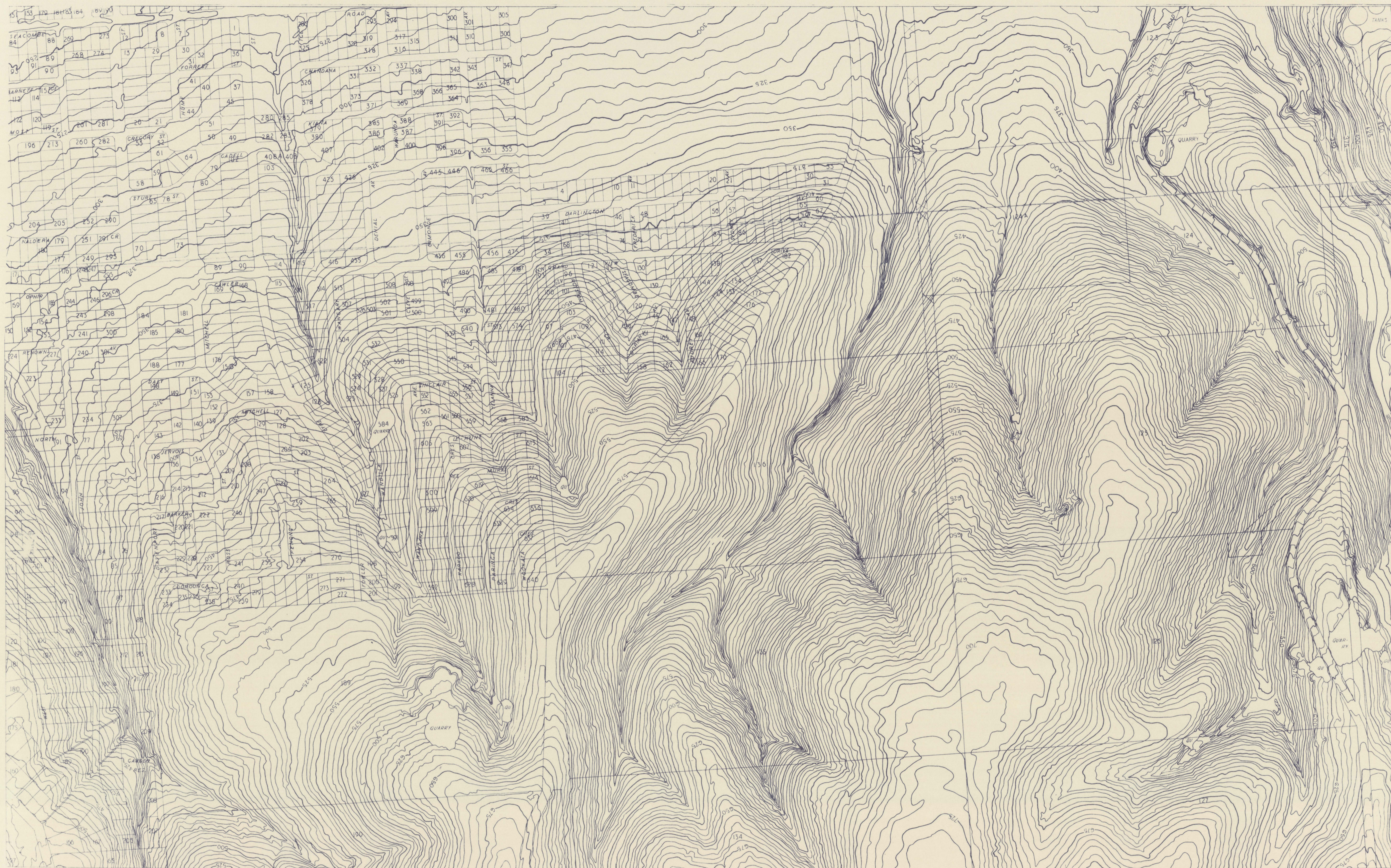


SEACLIFFE PARK, SEAVIEW DOWNS, O'HALLORAN HILL, ETC.
SCALE 4 CHAINS TO ONE INCH



ZO
SH

This map is prepared in accordance with Standard Specification for Horizontal and Vertical Control and Standards of map Accuracy published by the National Mapping Council Feb. 1953

Horizontal Check
No point should be more than ± 4 feet from its true position as determined on well defined features

Vertical Check
Not more than 10% of points checked should be in error by more than $\pm 2\frac{1}{2}$ feet from true elevation and no point more than ± 5 feet from true elevation as determined on well defined features

Datum of heights 100 feet below LW 05T

Prepared in the office of the Surveyor General from aerial photographs Film 78 Neg Nos 5098-5102 plotted on Wild A5 Autograph
Date of Photography 15 12 52

A1 A3	A1 A4	A1 B3
A1 C1	820 A1 ZONE 6 C2	A1 D1
A1 C3	A1 C4	A1 D3

SEACLIFFE PK. ETC.

820 A1C 2