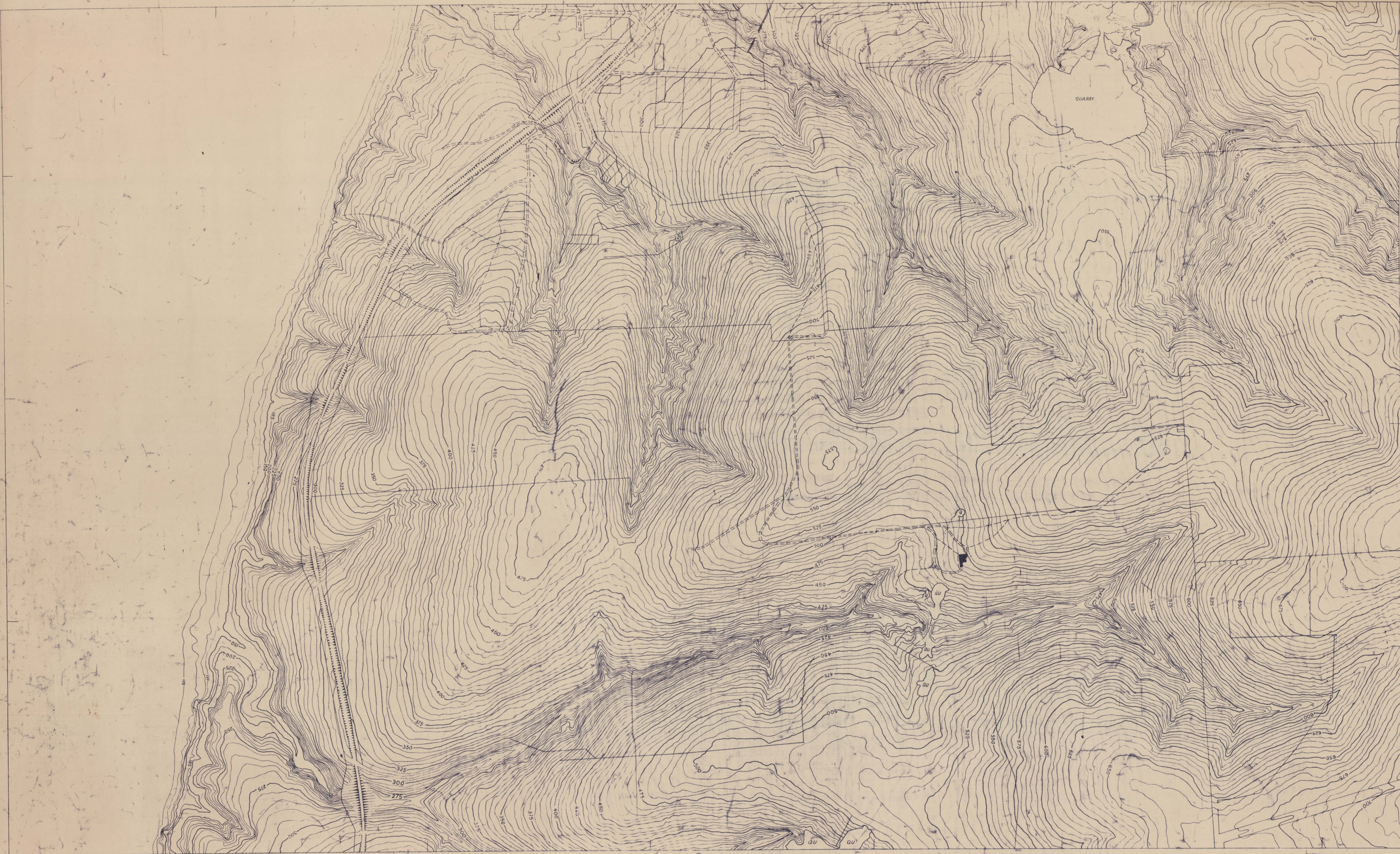


SCALE 4 CHAINS TO ONE INCH

ZONE 6  
SHEET 820 <sup>A1</sup>/<sub>C3</sub>



This map is prepared in accordance with Standard Specification for Horizontal and Vertical Control and Standards of map Accuracy published by the National Mapping Council Feb. 1953.

**Horizontal Check**

No point should be more than ±4 feet from its true position as determined on well defined features.

**Vertical Check**

Not more than 10% of points checked should be in error by more than ±2 feet from true elevation and no point more than ±5 feet from true elevation as determined on well defined features. Datum of heights 100 feet below LW051.

Prepared in the office of the Surveyor General from aerial photographs. Film 78 Neg. Nos. 5079-5082, 5079, 5098.

Plotted on Wild A5 Autograph.

Date of Photography 15 12 52

A1 C1	A1 C2
820 <sup>A1</sup> / <sub>C3</sub>	A1 C4

Blackwood & Co.  
Edmonton 820 <sup>A1</sup>/<sub>C3</sub>

1:3168  
24 x 35

**BLACKWOOD, ETC.**

820 A1 C3