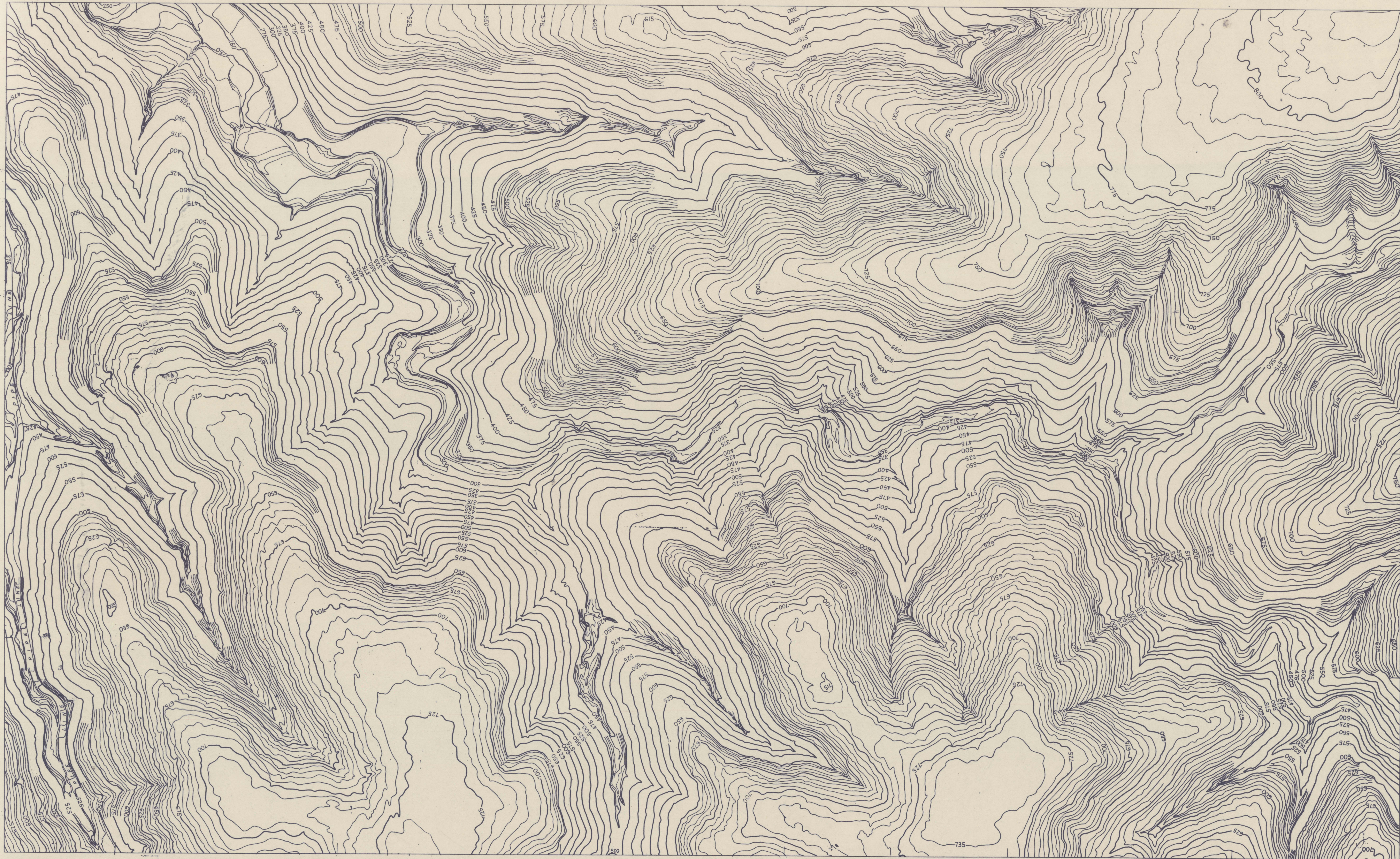


SECTIONS WEST COBHAM GARDENS ETC.  
SCALE 4 CHAINS TO ONE INCH.

ZONE 6  
SHEET 820  $\frac{A1}{D1}$



This map is prepared in accordance with Standard Specification for Horizontal and Vertical Control and Standards of map Accuracy published by the National Mapping Council Feb. 1953.

Horizontal Check:  
No point should be more than  $\pm 4$  feet from its true position as determined on well defined features.

Vertical Check:  
Not more than 10% of points checked should be in error by more than  $\pm 2\frac{1}{2}$  feet from true elevation, and no point more than  $\pm 5$  feet from true elevation as determined on well defined features.

Datum of heights 100 feet below LW.O.S.T.

Prepared in the office of the Surveyor General from aerial photographs Film 78 Neg Nos. 5102-5105. plotted on Wild A5 Autograph.

Date of Photography 15.12.52.

A1 A4	A1 B3	A1 B4
A1 C2	ZONE 6 820 A1 D1	A1 D2
A1 C4	A1 D3	A1 D4

U.P.I. LANDS PHOTOGRAM SEC.	PLotted	CHK	S. A1	5/68
Blackwood Blair	IBACKD		1/11/53	
Echuanga 820 A1 D1	CHECKED			
	APPRO			
	Job No.	P 23		

COBHAM GDNS.

820A1D1