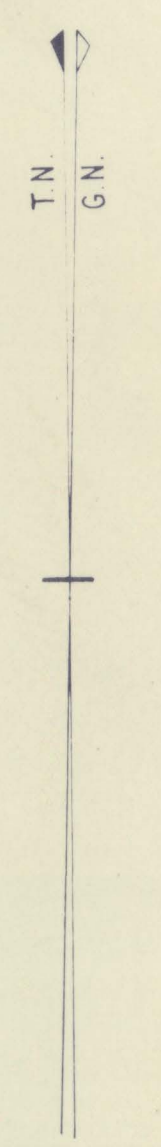
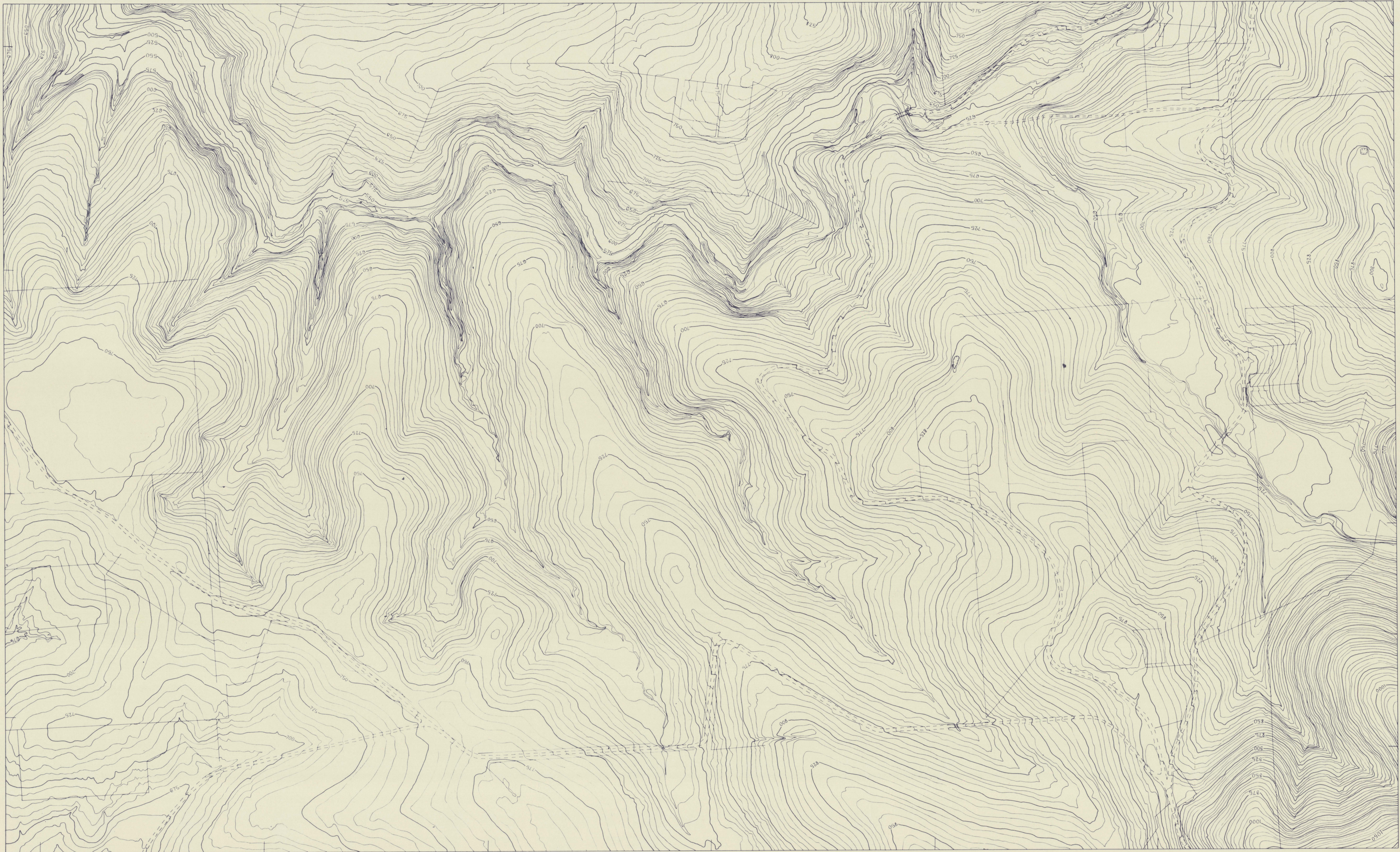


SCALE 4 CHAINS TO ONE INCH

ZONE 6
SHEET 820 $\frac{A1}{D4}$



This map is prepared in accordance with Standard Specification for Horizontal and Vertical Control and Standards of map Accuracy published by the National Mapping Council Feb 1953

Horizontal Check
No point should be more than ± 4 feet from its true position as determined on well defined features

Vertical Check
Not more than 10% of points checked should be in error by more than $\pm 2\frac{1}{2}$ feet from true elevation and no point more than ± 5 feet from true elevation as determined on well defined features Datum of heights 100 feet below LWOST

Prepared in the office of the Surveyor General from aerial photographs Film 78 Neg Nos 5052-5054, 5074-5077.
Plotted on Wild A5 Autograph
Date of Photography 15 12 52

A1 D1	A1 D2	A2 C1
A1 D3	ZONE 6 A1 D4 820	A2 C3

BLACKWOOD, ETC. ?

820 A1 D4