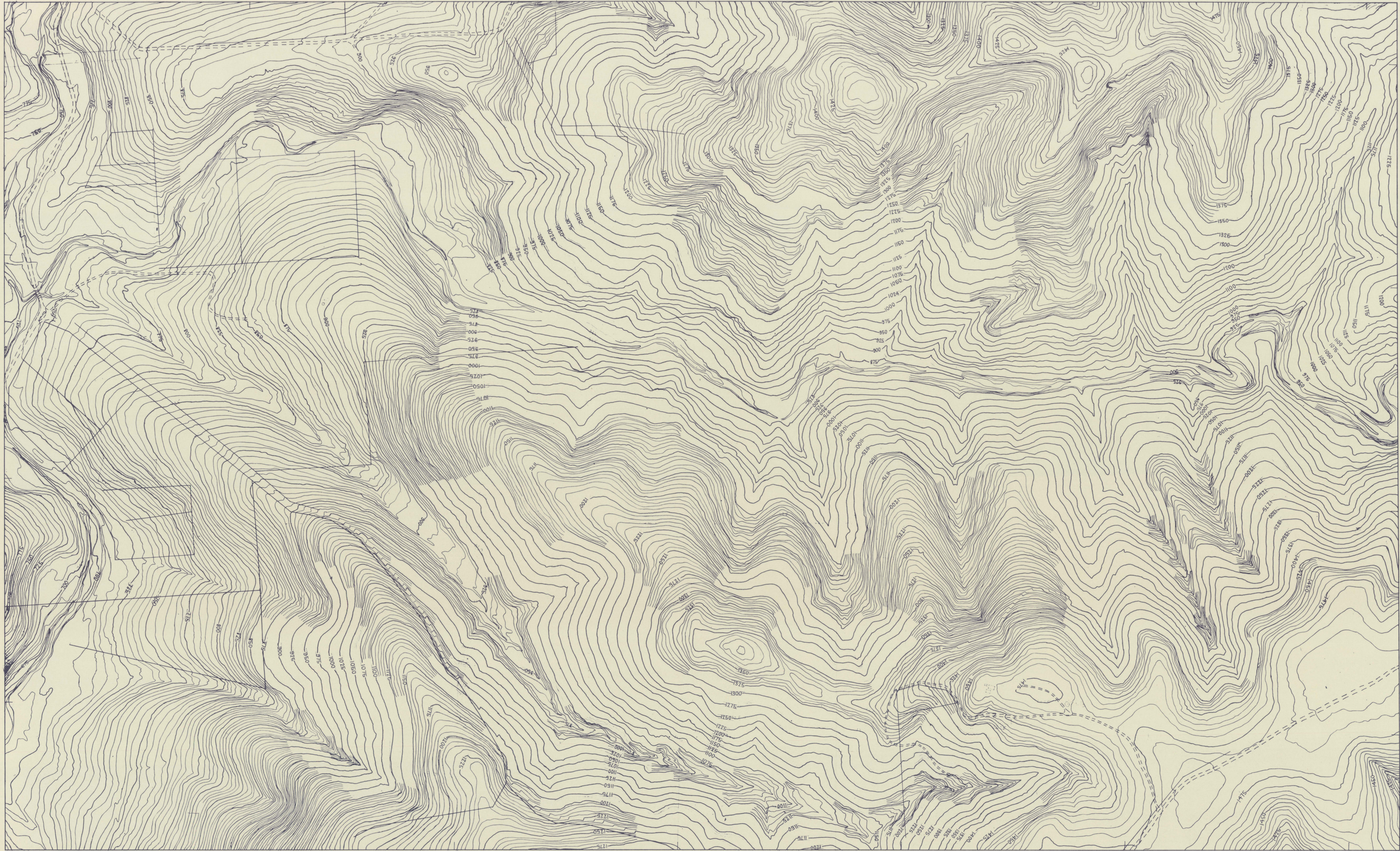


SCALE 4 CHAINS TO ONE INCH

ZONE 6  
SHEET 820 A2  
C1



This map is prepared in accordance with Standard Specification for Horizontal and Vertical Control and Standards of Map Accuracy published by the National Mapping Council Feb 1953.

Horizontal Check:  
No point should be more than  $\pm 4$  feet from its true position as determined on well defined features.  
Vertical Check:  
Not more than 10% of points checked should be in error by more than  $\pm 2\frac{1}{2}$  feet from true elevation and no point more than  $\pm 5$  feet from true elevation as determined on well defined features.  
Datum of heights 100 feet below L.W.O.S.T.

Prepared in the office of the Surveyor General from aerial photographs Film 78 Neg. Nos. 5029, 5030, 5050, & 5051. plotted on Wild A5 Autograph.  
Date of Photography 15 - 12 - 52.

A1 B4	A2 A3	
A1 D2	ZONE 6 A2 C1 820	
A1 D4	A2 C3	

AS TO BE  
REPRODUCED  
EXACTLY

24000 5000

EDEN HILLS, ETC. ?

820 A2 C1

DEPT. LANDS PHOTOGRAM SEC.	FILED	SCALE 1/5000
INDEXED	DATE	22.12.52