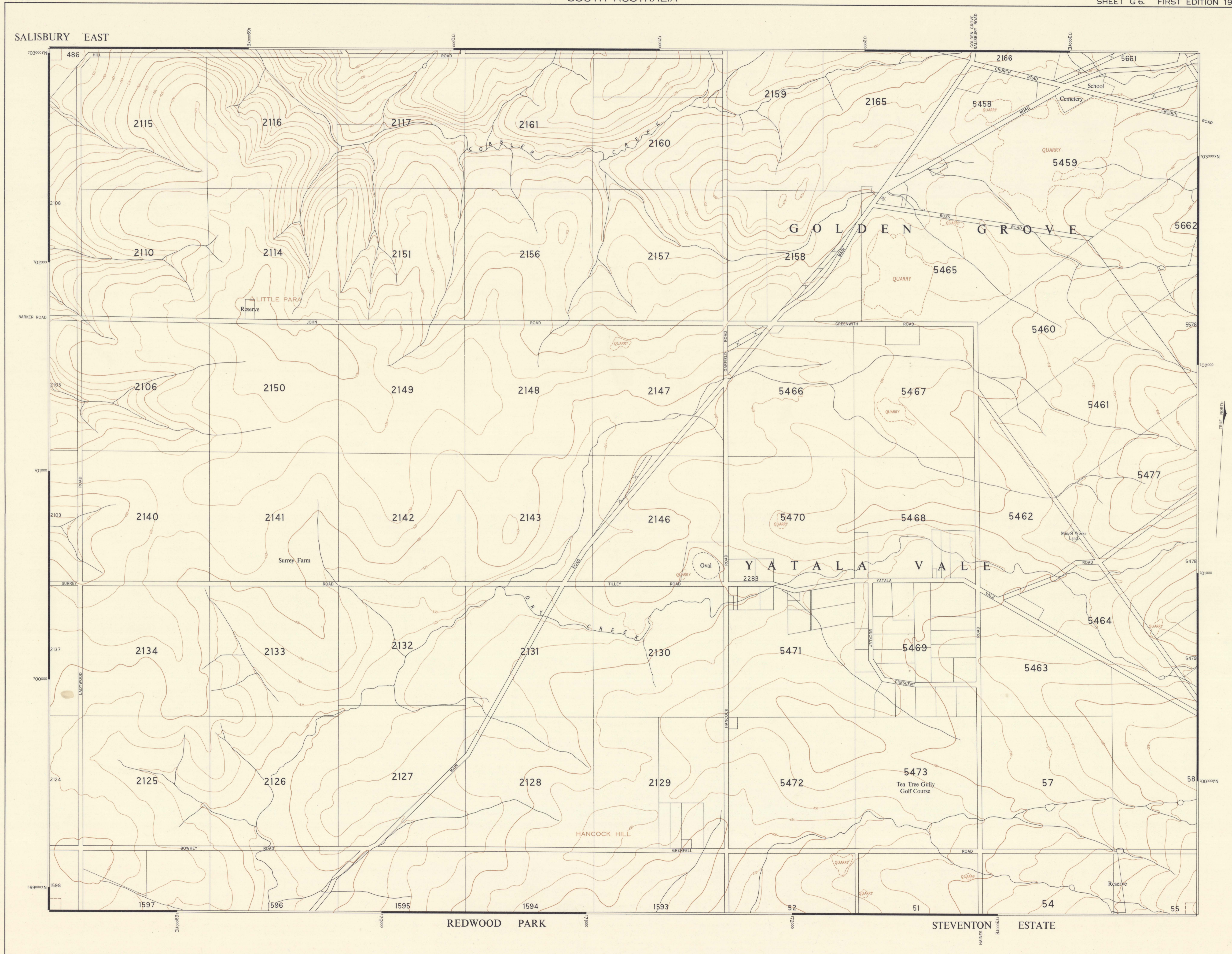


GOLDEN GROVE
SOUTH AUSTRALIA

ADELAIDE AND ENVIRONS SERIES
SHEET G 6. FIRST EDITION 1960

1:7920



CONTROL Triangulation and traverse by S. A. Department of Lands, based on Sydney Observatory, Latitude 33° 51' 41.0" S., Longitude 151° 12' 17.6" E.

COMPILED Compiled from enlargements of the 1:15840 Adelaide and Environs Series. This series was compiled in the Office of the Surveyor General from ground surveys, aerial photography by Department of Lands Aerial Survey Unit, Mission No. S. A. 37, 315, December 1954, topographic detail by 1952 AG and A4 Series Plans.

CARTOGRAPHY Cartography by the Drawing Office, Department of Lands, under direction of the Surveyor General.

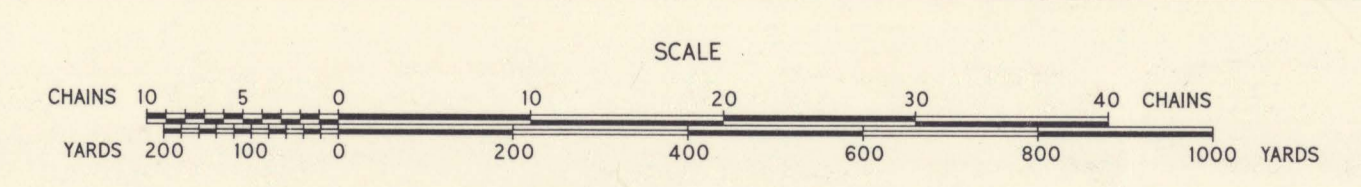
PROJECTION Transverse Mercator. Australian National Grid.

CONTOURS Contour interval 35 feet. Datum Mean Sea Level Port Adelaide.

PHOTOGRAPHY H. J. Wall, Government Photodigrapher, Adelaide.

INDEX TO ADJOINING SHEETS

F5 SALISBURY	F6 LITTLE PARA	F7 GOULD CREEK
G5 PARAFIELD	G6 GOLDEN GROVE	G7 HERMITAGE
H5 MODBURY	H6 TEA TREE GULLY	H7 HOUGHTON



GOLDEN GROVE
SHEET G 6

HUNDRED OF YATALA

PUBLIC LIBRARY
OF SOUTH AUSTRALIA
REFERENCE
MAP COLLECTION
NOT TO BE LENT



831.5
1:7920
Golden
Grove