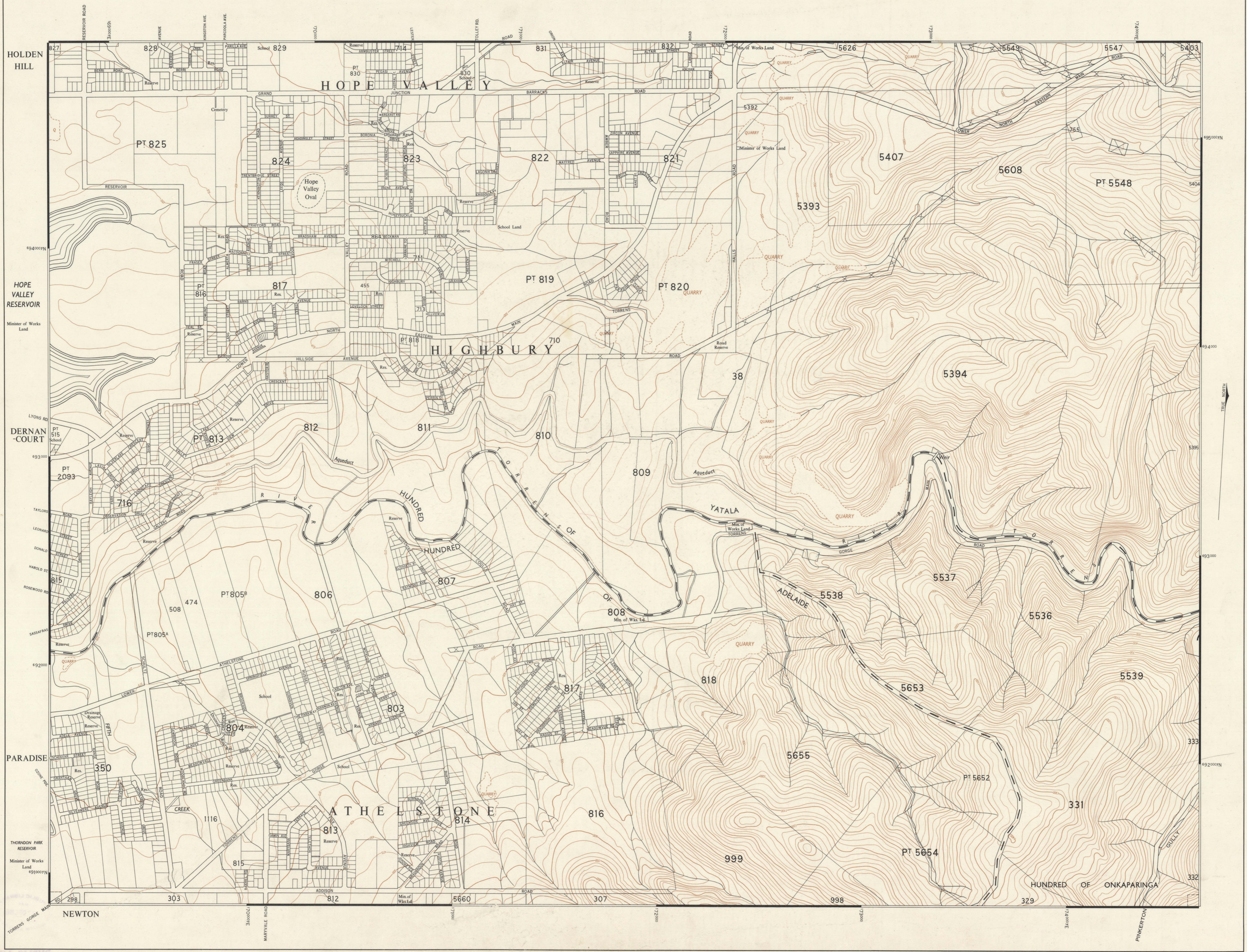


ATHELSTONE SOUTH AUSTRALIA

ADELAIDE AND ENVIRONS SERIES
SHEET J6. FIRST EDITION 1964

1:7920



CONTROL Triangulation and traverse by S.A. Department of Lands, based on Sydney Observatory. Latitude 37° 51' 41" S., Longitude 151° 12' 17" E.

COMPILED Compiled from enlargements of the 1:15840 Adelaide and Environs Series. This series was compiled in the Office of the Surveyor General from ground surveys and aerial photography by Department of Lands Aerial Survey Unit, Mission No. S.A., Proj. 215, December 1956. Topographic detail by W45 and A6 Series Plans.

CARTOGRAPHY Cartography by the Drawing Office, Department of Lands, under direction of the Surveyor General.

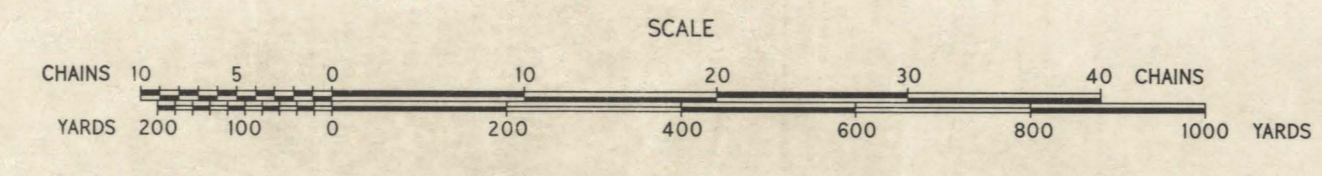
PROJECTION Transverse Mercator. Australian National Grid.

CONTOURS Contour interval 25 feet. Datum Mean Sea Level Port Adelaide.

PHOTOGRAPHY H. J. Wall, Government Photographic, Adelaide.

INDEX TO ADJOINING SHEETS

H 5 MODBURY	H 6 TEA TREE GULLY
J 5 GILLES PLAINS	J 6 ATHELSTONE
K 5 GLYNDE	K 6 MORIALTA



ATHELSTONE SHEET J6

HUNDREDS OF YATALA
ADELAIDE AND ONKAPARINGA

831.5
1:7,920
Athelstone