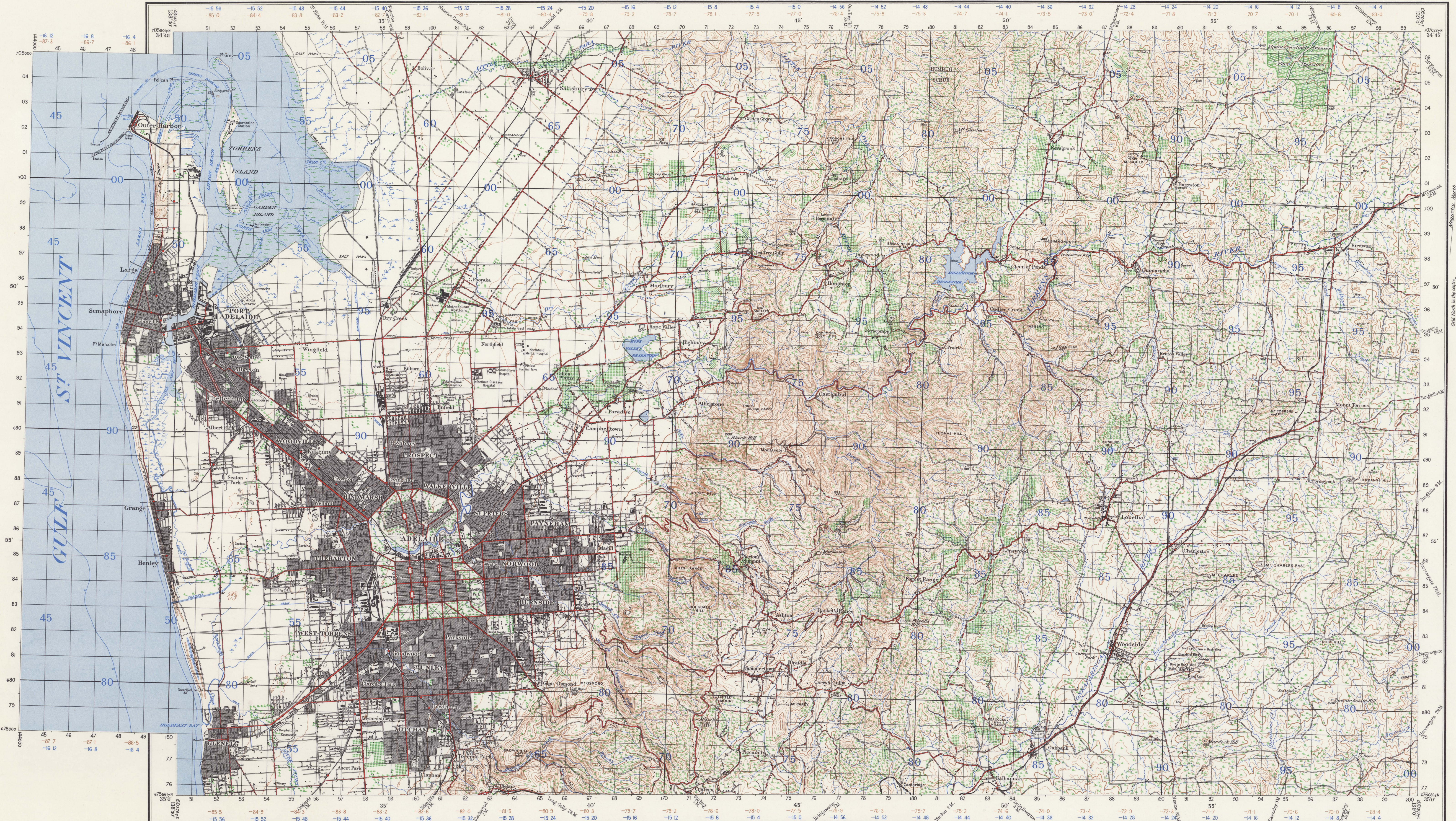


SOUTH AUSTRALIA ADELAIDE

No 810 ZONE 6
SHEET SOUTH 154M
IV SE&SW

AUSTRALIA 1:63,360



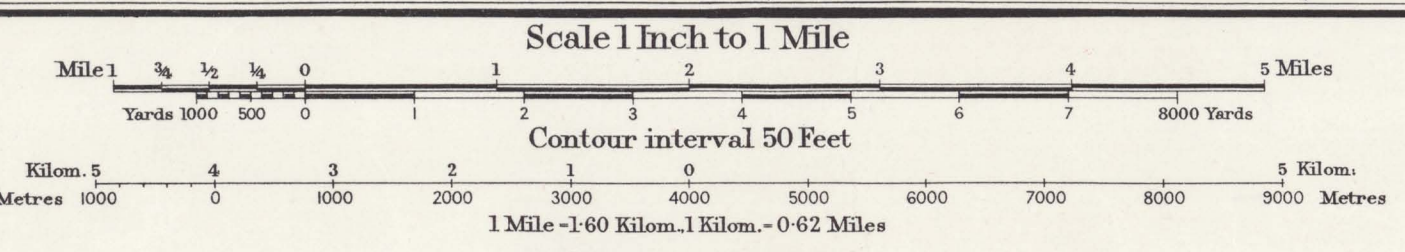
Prepared by Australian Section Imperial General Staff

The framework of this Map depends entirely upon the First and Second Order Triangulation as carried out by the Australian Survey Corps. Elevations in feet; Transverse Mercator Projection. Elevations in feet; Mean Sea Level, Port Adelaide. Surveyed in 1837 by the Australian Survey Corps with aid of Air Photos by the Royal Australian Air Force.

Origin of Longitude: Sydney Observatory, 151° 12' 17.85"

Bridge (solid except where shown as necessary or iron)	—
Culvert	—
Water-hole	—
Swamp or Marsh	—
Crack	—
Watercourse (non-permanent)	—
Water Channel	—
Railway (double line)	—
Railway (single line)	—
Light railway	—

Bankment	—
Cutting	—
Post Office	P
Post & Telegraph Office (in villages)	T
Roads (First Class)	—
Second	—
Third	—
Roads unsurveyable to M.T. in bad weather	—
Stone Wall	—



INDEX TO ADJOINING SHEETS

VINCENT	GAWLER	CAMBRAI
ADLAIDE	MANNING	
ELCHINGA	NOBLONG	

Truck	—
House	—
Garage	—
School	—
Shop	—
Blacksmith's Shop (Forge)	—
Church	—
Mill or Factory	—
Lighthouse	—
Telegraph or Telephone line	—

Wind Pump	—
Cemetery	—
Timber	—
Scrub	—
Spur (First Class)	—
and altitude (Third)	—
Fourth	—
Pathway lines	—
Orchard or Vine	—

TO GIVE A GRID REFERENCE ON THIS SHEET
Pay attention to the smaller coordinate figures at the corners and in margins: they are the reading full coordinates of 172.
PAY ATTENTION TO LARGER MARGINAL FIGURES AND TO THOSE PRINTED ON THE FACE OF THE MAP VIZ. 172
POINT BLACK HILL (TRIG.)
Elevations in feet: 72, 90, 100, 110, 120, 130, 140, 150, 160, 170, 180, 190, 200, 210, 220, 230, 240, 250, 260, 270, 280, 290, 300, 310, 320, 330, 340, 350, 360, 370, 380, 390, 400, 410, 420, 430, 440, 450, 460, 470, 480, 490, 500, 510, 520, 530, 540, 550, 560, 570, 580, 590, 600, 610, 620, 630, 640, 650, 660, 670, 680, 690, 700, 710, 720, 730, 740, 750, 760, 770, 780, 790, 800, 810, 820, 830, 840, 850, 860, 870, 880, 890, 900, 910, 920, 930, 940, 950, 960, 970, 980, 990, 1000.
Estimate south westerly: 72, 90, 100, 110, 120, 130, 140, 150, 160, 170, 180, 190, 200, 210, 220, 230, 240, 250, 260, 270, 280, 290, 300, 310, 320, 330, 340, 350, 360, 370, 380, 390, 400, 410, 420, 430, 440, 450, 460, 470, 480, 490, 500, 510, 520, 530, 540, 550, 560, 570, 580, 590, 600, 610, 620, 630, 640, 650, 660, 670, 680, 690, 700, 710, 720, 730, 740, 750, 760, 770, 780, 790, 800, 810, 820, 830, 840, 850, 860, 870, 880, 890, 900, 910, 920, 930, 940, 950, 960, 970, 980, 990, 1000.
REFERENCE 722902
Unit: Yard, Square, Reference to nearest, Nearest similar reference distant 60 miles

NOTE: The brown (convergence) and blue (true correction) figures within the borders of this map are for Artillery purposes. Convergence based on longitude M.T.

Crown Copyright Reserved