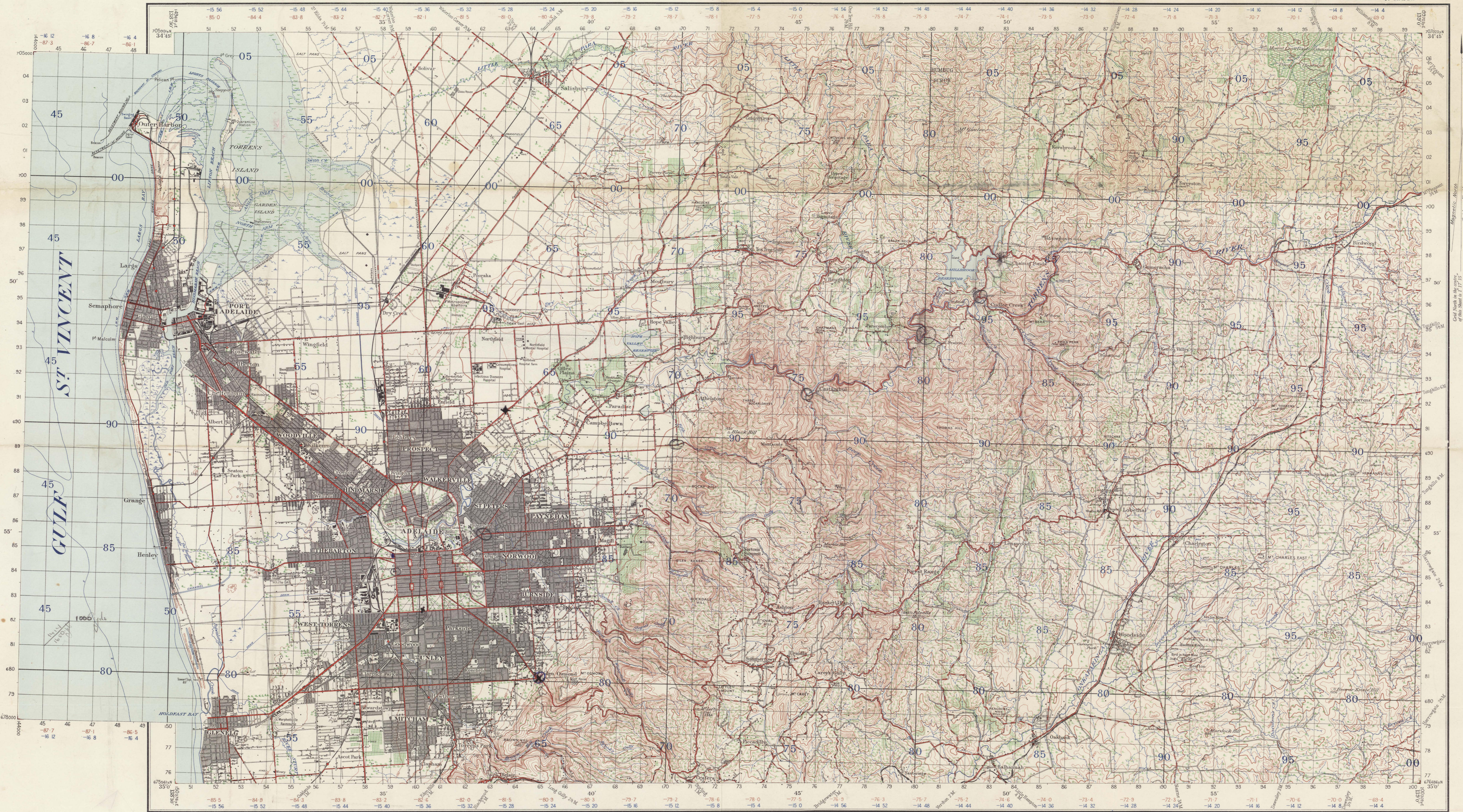


SOUTH AUSTRALIA ADELAIDE

N° 810 ZONE 6
SHEET SOUTH 154 M
TV SP & SW

AUSTRALIA 1:63,360



Prepared by Australian Section Imperial General Staff

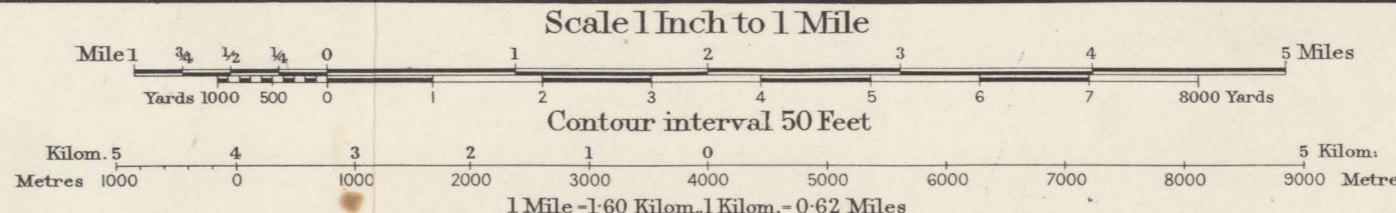
The framework of this Map depends entirely upon the First and Second Order Triangulation as carried out by the Australian Survey Corps. Transverse Mercator Projection. Elevations in feet. Mean Sea Level, Port Adelaide. Surveyed in 1837 by the Australian Survey Corps with aid of Air Photos by the Royal Australian Air Force.

Origin of Longitude: Sydney Observatory, 151°12'17.85"

Reprinted by Royal Aust. Survey Corps 1949

| | |
|---|---|
| Bridge (wood except where shown as masonry or iron) | — |
| Canal | — |
| Water Slide | — |
| Swamp or Marsh | — |
| Creek | — |
| Watercourse (non-perennial) | — |
| Water Channel | — |
| Railway (double line) | — |
| Railway (single line) | — |
| Light railway | — |

| | |
|---|---|
| Embankment | — |
| Canal | — |
| Post Office | P |
| Post & Telegraph Office (in village) | T |
| First Class Road | — |
| Second Class Road | — |
| Third Class Road | — |
| Road | — |
| Roads impassable to M.T. in bad weather | — |
| Stone Wall | — |



| INDEX TO ADJOINING SHEETS | | |
|---------------------------|----------|---------|
| VINCENT | GAWLER | CAMBRAI |
| ADELAIDE | MANNING | |
| EDINGHA | MOBILONG | |

| | |
|-----------------------------|---|
| Track | — |
| House | — |
| Garage | — |
| School | — |
| Hotel | — |
| Blacksmith's Shop (large) | — |
| Chapel | — |
| Mill or Factory | — |
| Lighthouse | — |
| Telegraph or Telephone line | — |

| | |
|----------------------------------|---|
| Wind Pump | — |
| Contour | — |
| Spire | — |
| Spire (First Class) | — |
| Trey Station Second and altitude | — |
| Fourth | — |
| Fathom lines | — |
| Contours | — |
| Orchard or Vine | — |

| TO GIVE A GRID REFERENCE ON THIS SHEET | |
|---|------|
| Pay attention to the smaller or outside figures at the corners and in margins. They are for finding full co-ordinates only 172. | |
| PAY ATTENTION TO LARGER NUMERICAL FIGURES AND TO THOSE PRINTED ON THE FACE OF THE MAP, viz. 172 | |
| POINT BLACK HILL (TRIG.) | |
| East | West |
| 72 | 90 |
| 722 | 902 |
| REFERENCE 722902 | |
| Unit | Yard |
| Square | 100 |
| Reference to nearest | |
| Nearest similar reference distant 60 miles | |

NOTE: The brown (convergence) and blue (true correction) figures within the borders of this map are for Artillery purposes. Convergence based on Longitude 138° E.

Crown Copyright Reserved