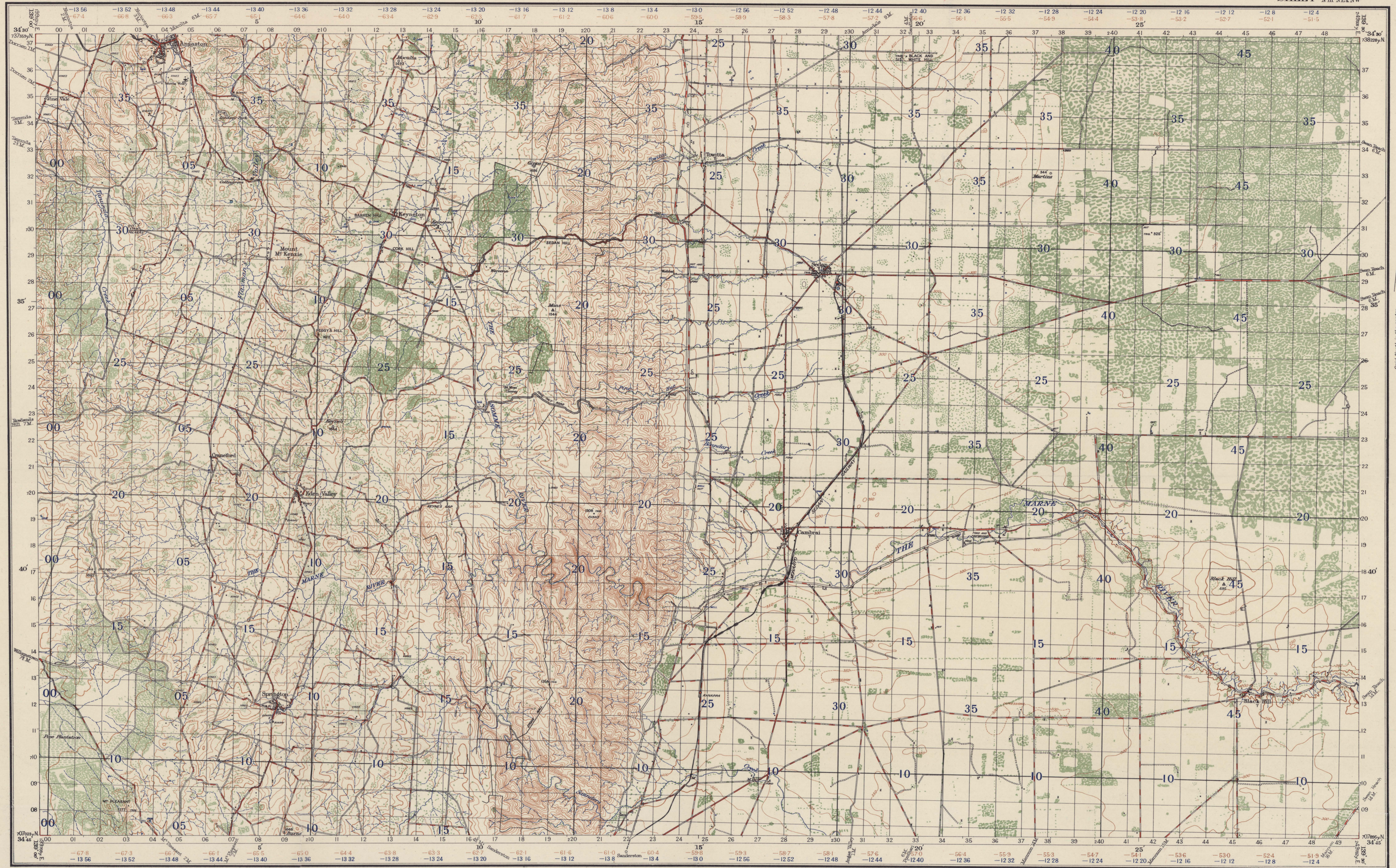


SOUTH AUSTRALIA CAMBRAI

AUSTRALIA 1:63,360

Nº801 ZONE6
SHEET SOUTH I 54
N 116 S 24 W



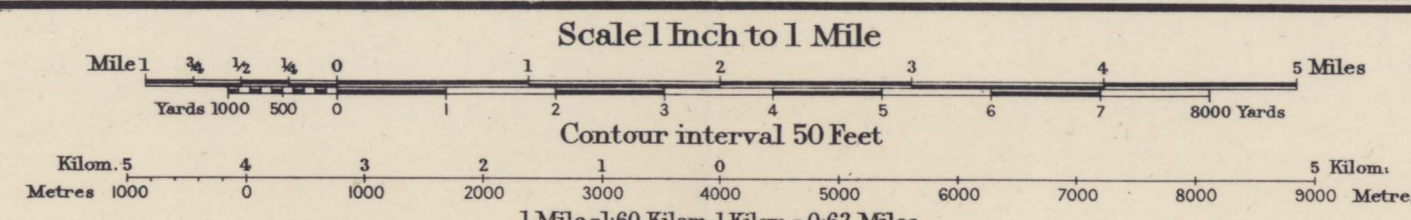
Prepared by Australian Section Imperial General Staff

The framework of this Map depends entirely upon the First and Second Order Triangulation as carried out by the Australian Survey Corps. Transverse Mercator Projection. Elevations in feet; Mean Sea Level, Port Adelaide. Surveyed in 1937 by the Australian Survey Corps with aid of Air Photos by the Royal Australian Air Force.

Origin of Longitude: Sydney Observatory, 151° 12' 17.85"

| | |
|---|---|
| Bridge (road except where shown as railway or iron) | — |
| Culvert | — |
| Water Hole | — |
| Swamp or Marsh | — |
| Crack | — |
| Watercourse (non-perennial) | — |
| Water Channel | — |
| Railway (double line) | — |
| Railway (single line) | — |
| Light railway | — |

| | |
|---|---|
| Encampment | — |
| Cutting | — |
| Post Office | P |
| Post & Telegraph Office (in villages) | T |
| Roads (First Class) | — |
| Roads (Second Class) | — |
| Roads (Third Class) | — |
| Roads (Fourth Class) | — |
| Roads impassable to M.T. in bad weather | — |
| Stone Wall | — |



INDEX TO ADJOINING SHEETS

| | | |
|----------|---------|--------------|
| KAPINDA | TRURO | BLANCHE-TOWN |
| GAWLER | CAMBRAI | SWAN REACH |
| ADELAIDE | MANNUM | CARNAMOUNT |

| | |
|-----------------------------|---|
| Track | — |
| House | — |
| Garage | — |
| School | — |
| Boat | — |
| Blacksmith's Shop (Forge) | — |
| Church | — |
| Mill or Factory | — |
| Lighthouse | — |
| Telegraph or Telephone line | — |

| | |
|-----------------------------|---|
| Wind Pump | — |
| Cemetery | — |
| Flower | — |
| Scrub | — |
| Trig Station (First Class) | — |
| Trig Station (Second Class) | — |
| Trig Station (Third Class) | — |
| Trig Station (Fourth Class) | — |
| Fathom lines | — |
| Contours | — |

TO GIVE A GRID REFERENCE ON THIS SHEET
Pay attention to the smaller co-ordinate figures at the corners and in margins. They are the starting figures for the corner and margin figures. Pay attention to larger marginal figures and to those printed on the face of the map viz. 244.

POINT BLACK HILL (TRIG.)

| | | |
|-------|-----|-----|
| East | 44 | 17 |
| North | 116 | 174 |

REFERENCE 445174

| | |
|----------------------|----------|
| Unit | Yard |
| Square | 100 |
| Reference to nearest | 60 Miles |

NOTE The brown (convergence) and blue (time correction) figures within the borders of this map are for Artillery purposes. Convergence based on Longitude 151° E.

Crown Copyright Reserved
1940.