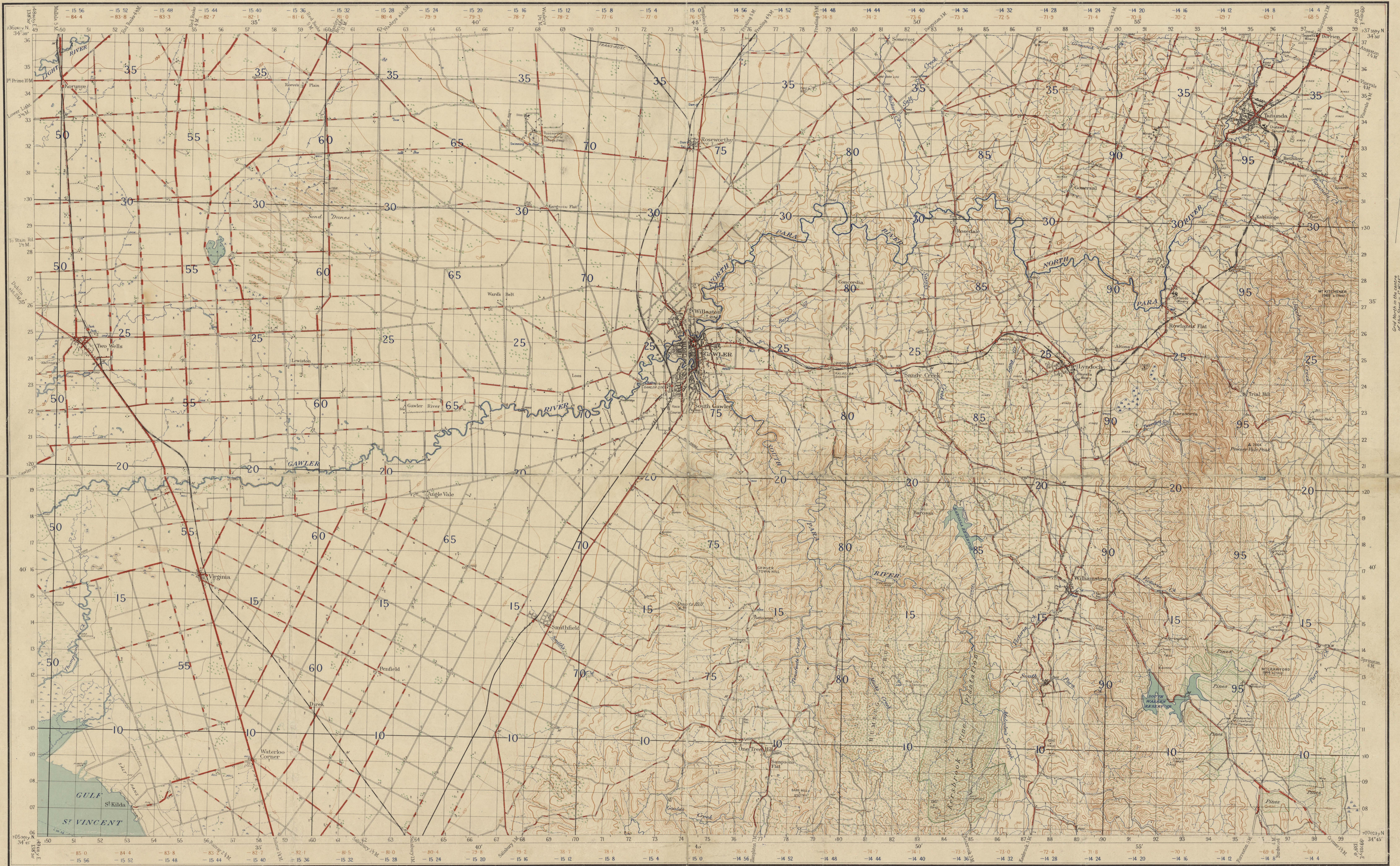


# SOUTH AUSTRALIA GAWLER

Convergence based  
on Longitude 141°E      No 800 ZONE 6  
SHEET SOUTH 54  
MIVNEANW

AUSTRALIA 1:63360



Prepared by Australian Section Imperial General Staff

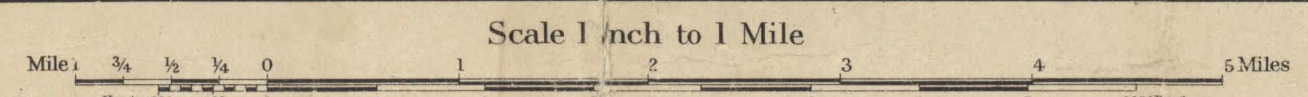
The Framework of this Map depends entirely upon the Main Geodetic Triangulation of S.A., supplemented by topographical triangulation by the Australian Survey Corps. Transverse Mercator Projection. Elevations in feet, Mean Sea Level, Port Adelaide Surveyed in 1935 by Australian Survey Corps with aid of Air Photos by Royal Australian Air Force.

Origin of Longitude, Sydney Observatory, 151° 12' 17.8"

Bridge (wood except where shown as masonry or iron)	
Culvert	
Water Hole	
Swamp or Marsh	
Creek	
Watercourse (non-perennial)	
Water channel	
Railway (double line)	
Railway (single line)	

Light railways	
Embankment	
Cutting	
Post Office	
Post & Telegraph Office (in villages)	
Roads	
First Class	
Second	
Third	
Fourth	
Roads impassable to M.F. in bad weather	

July 1937



Contour interval 50 Feet

1 Mile = 1.609 km. 1 Kilom. = 0.62 Miles

INDEX TO ADJOINING SHEETS

SANDY PT	KAPUNGA	TRURO
ST KILDA	GAWLER	ELLEN
ABELLAIDE	MANNING	

NOTE: The brown (convergence) and blue (time correction) figures within the borders of this map are for artillery purposes.

Track	
House	
Garage	
School	
Hotel	
Blacksmith's Shop (forge)	
Church	
Mill or Factory	
Lighthouse	

Crown Copyright Reserved

Telegraph or telephone line	
Wind Pump	
Cemetery	
Timber	
Scrub	
Trig Station (and altitude)	
Intersected point (and altitude)	
Pathway Lines	
Contours	

TO GIVE A GRID REFERENCE ON THIS SHEET			
Pay attention to the smaller convergency figures at the corners and to the larger marginal figures and to those printed on the face of the map viz 113			
PAY ATTENTION TO LARGER MARGINAL FIGURES AND TO THOSE PRINTED ON THE FACE OF THE MAP VIZ 113			
POINT QUARTZ HILL (TRIG)			
East	North	East	North
73	15	73	15
Take care to note the small figures at the corners of the map which give the convergency at the corners of the map. The larger figures at the corners of the map give the convergency at the corners of the map. The larger figures at the corners of the map give the convergency at the corners of the map.			
Reference East	738	Reference North	150
Unit	Square	Yard	1000
Reference to nearest	0		
Nearest similar reference distant	60	Miles	