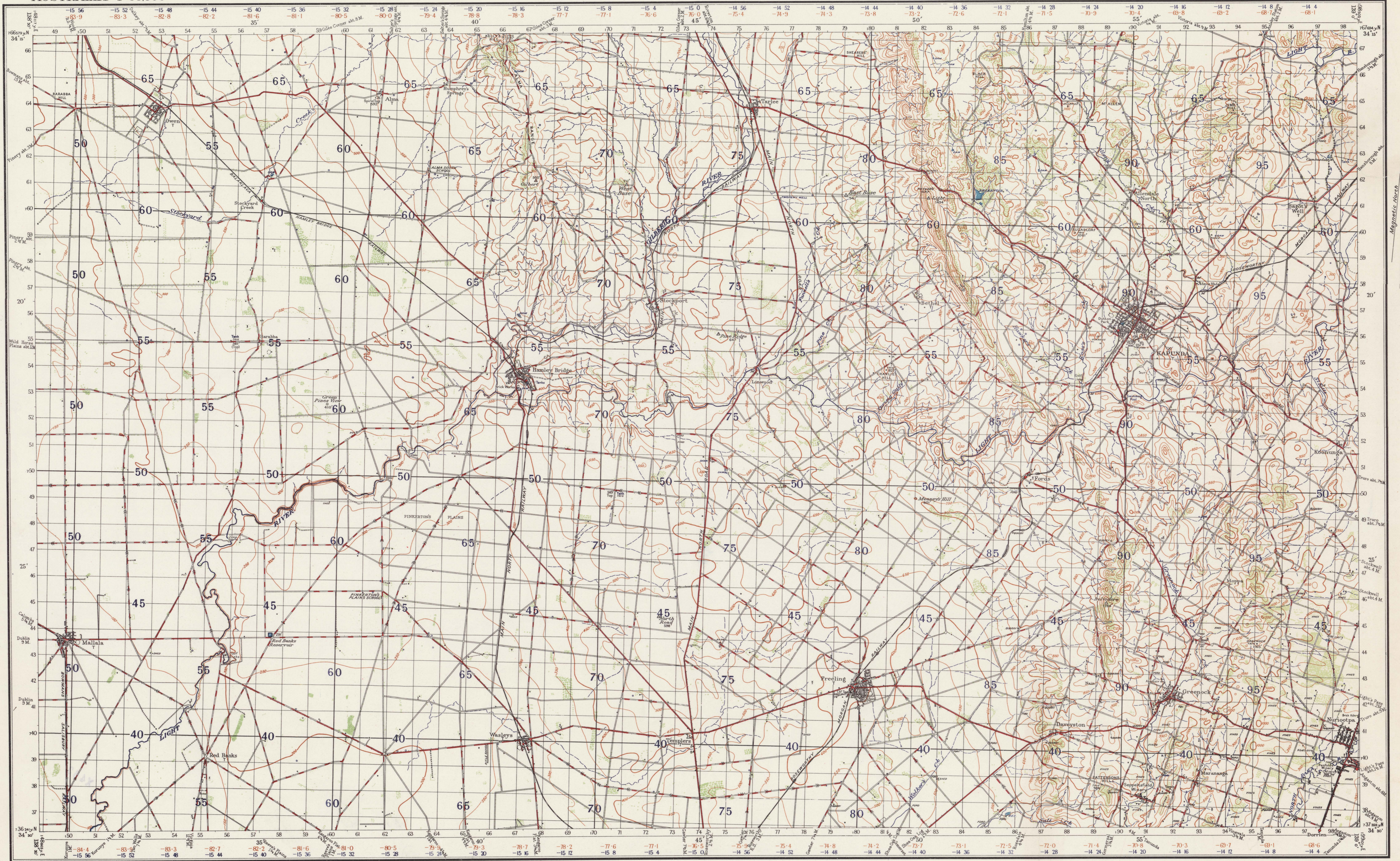


SOUTH AUSTRALIA KAPUNDA

No 790 ZONE 6
SOUTH 154
SHEET M.T.S.E.A.S.W.

AUSTRALIA 1:63,360



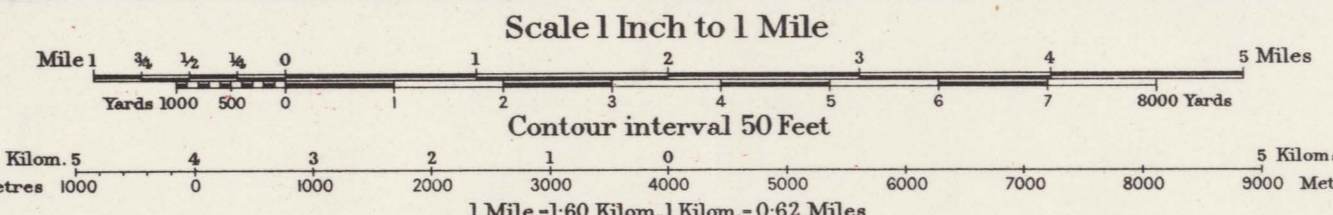
Prepared by Australian Section Imperial General Staff

The framework of this Map depends entirely upon the First and Second Order Triangulation as carried out by the Australian Survey Corps. Elevations in feet: Mean Sea Level, Port Adelaide. Surveyed in 1888 by the Australian Survey Corps with aid of Air Photos by the Royal Australian Air Force.

Origin of Longitude: Sydney Observatory, 181°12'17.8"

Bridge (road except where shown as masonry or iron)	—
Culvert	—
Water-hole	—
Swamp or Marsh	—
Creek	—
Watercourse (non-perennial)	—
Water Channel	—
Railway (double line)	—
Railway (single line)	—
Light railway	—

Embankment	—
Cutting	—
Post Office	P
Post & Telegraph Office (in villages)	T
Roads	—
First Class	—
Second Class	—
Third	—
Fourth	—
Roads impassable to M.T. in bad weather	—
Stone Wall	—



INDEX TO ADJOINING SHEETS

WAKEFIELD	RIVERTON	EUDUNDA
ADRIAN	KAPUNDA	TRURO
VICENT	GAWLER	CAMBRAI

Track	—
House	—
Garage	—
School	—
Hotel	—
Blacksmith's Shop (Forge)	—
Church	—
Mill or Factory	—
Lighthouse	—
Telegraph or Telephone line	—

Wind Pump	—
Cemetery	—
Timber	—
Scrub	—
First Class	—
Second	—
Third	—
Fourth	—
Fashion line	—
Contours	—

TO GIVE A GRID REFERENCE ON THIS SHEET

Pay attention to the smaller or ordinate figures at the corners and to margins. They are the starting data in co-ordinating 889

PAY ATTENTION TO LARGER MARGINAL FIGURES AND TO THOSE PRINTED ON THE FACE OF THE MAP (VIZ. 189)

POINT	WAKEFIELD	TRURO
East	89	45
North	7	4
Estimate to the westward	893	457
Estimate to the northward	893	457
REFERENCE	893457	

Unit: Square Yard
Scale: 8000
Reference to nearest: 100
Nearest similar reference distant: 60 miles

NOTE The brown (convergence) and blue (time correction) figures within the borders of this map are for artillery purposes. Convergence based on Longitude 141°E.

Crown Copyright Reserved
1940.