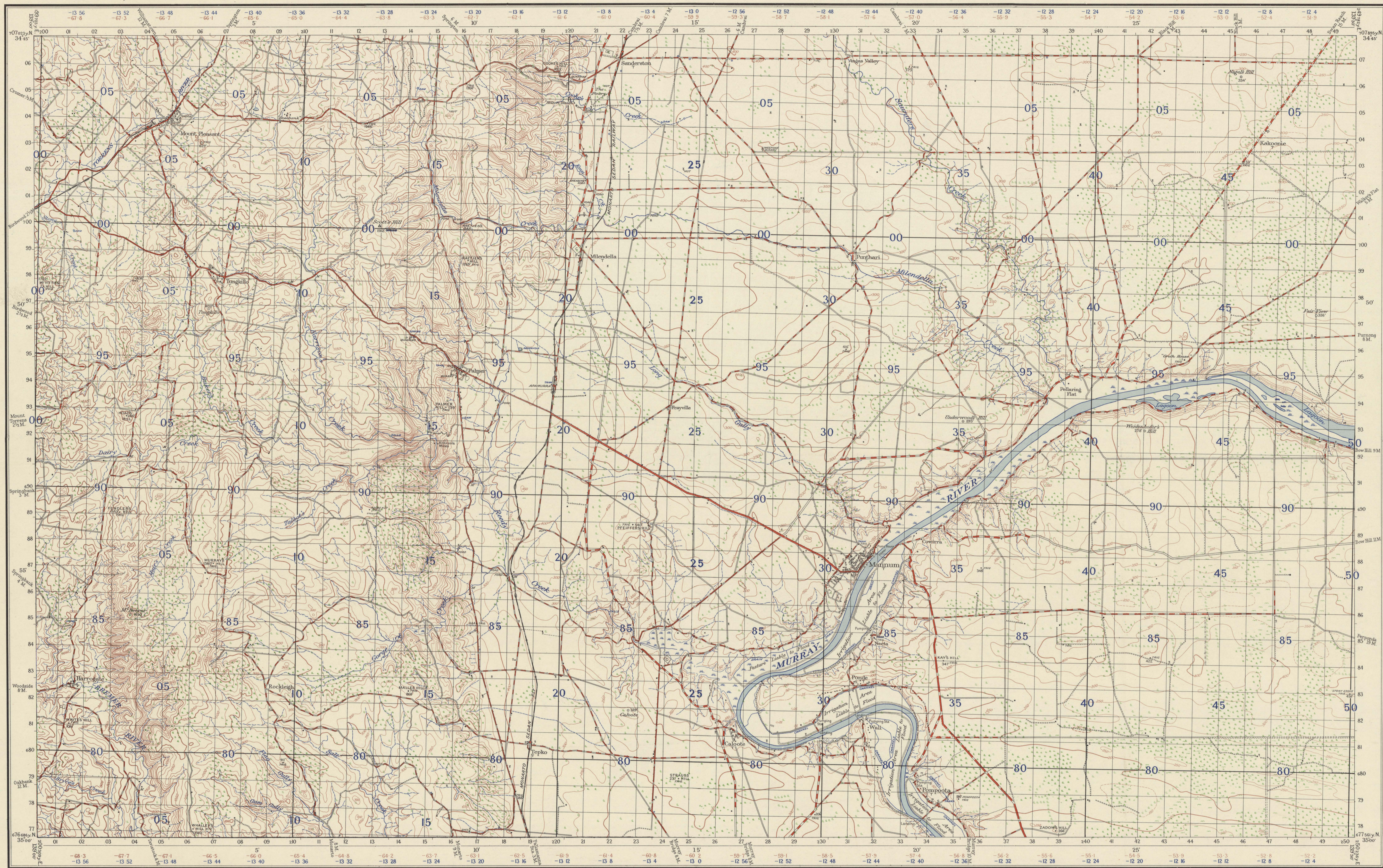


SOUTH AUSTRALIA MANNUM

No 811 ZONE 6
SHEET SOUTH 154
NH S.E. & SW

AUSTRALIA 1:63,360



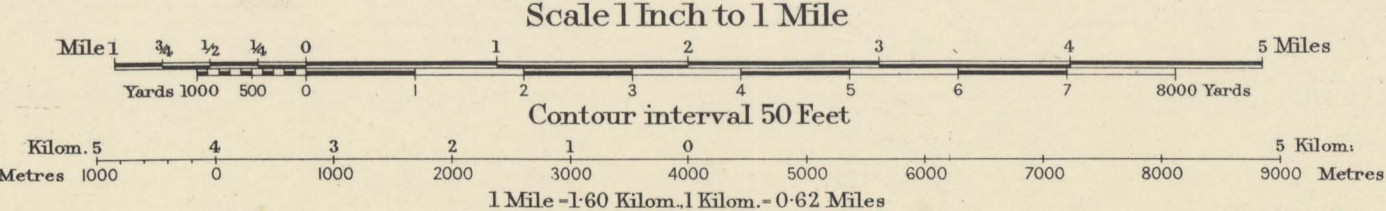
Prepared by Australian Section Imperial General Staff

The framework of this map depends entirely upon the First and Second Order Triangulation as carried out by the Australian Survey Corps. Transverse Mercator Projection. Elevations in feet. Mean Sea Level. Port Adelaide. Surveyed in 1837 by the Australian Survey Corps with aid of Air Photos by the Royal Australian Air Force.

Origin of Longitude: Sydney Observatory.
151° 12' 17.36"

- Bridge (wood except where shown as masonry or steel)
- Outcrop
- Water-hole
- Swamp or Marsh
- Creek
- Watercourse (non permanent)
- Water Channel
- Railway (double line)
- Railway (single line)
- Light railway

- Embankment
- Cutting
- Road Office
- Post & Telegraph Office (in village)
- Roads (First Class)
- Roads (Second Class)
- Roads (Third Class)
- Roads (impassable to M.T. in bad weather)
- Stone Wall



INDEX TO ADJOINING SHEETS

GAWLER	CAMBRIA	SWAN REACH
ADLAIDE	MANNUM	CAURAMONT
ECHUNGA	MOBLONG	KAROONDA

- Track
- House
- Gorge
- School
- Hotel
- Blacksmith's Shop (large)
- Church
- Mill or Factory
- Lighthouse
- Telegraph or Telephone line

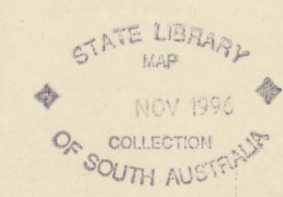
- Wind Pump
- Cemetery
- Timber
- Scrub
- Tray Stations (First Class)
- Tray Stations (Second)
- Tray Stations (Third)
- Tray Stations (Fourth)
- Fathom lines
- Contours

TO GIVE A GRID REFERENCE ON THIS SHEET

Pay attention to the smaller co-ordinate figures at the corners and margins. They are the starting full co-ordinates viz. 212.

PAY ATTENTION TO LARGER MARGINAL FIGURES AND TO THOSE PRINTED ON THE FACE OF THE MAP, VIZ. 112.

POINT		Scotts Hill (7796)	
East	North	East	North
12	00	12	00
Estimate tenth eastwards		Estimate tenth northwards	
123	001	123	001
REFERENCE 123001			
Unit	Yard	Unit	Yard
Square	3000	Square	3000
Reference to nearest	100	Reference to nearest	100
Nearest similar reference distant 60 miles		Nearest similar reference distant 60 miles	



Crown Copyright Reserved

NOTE The brown (convergence) and blue (time correction) figures within the borders of this map are for artillery purposes. Convergence based on longitude 151° 12'