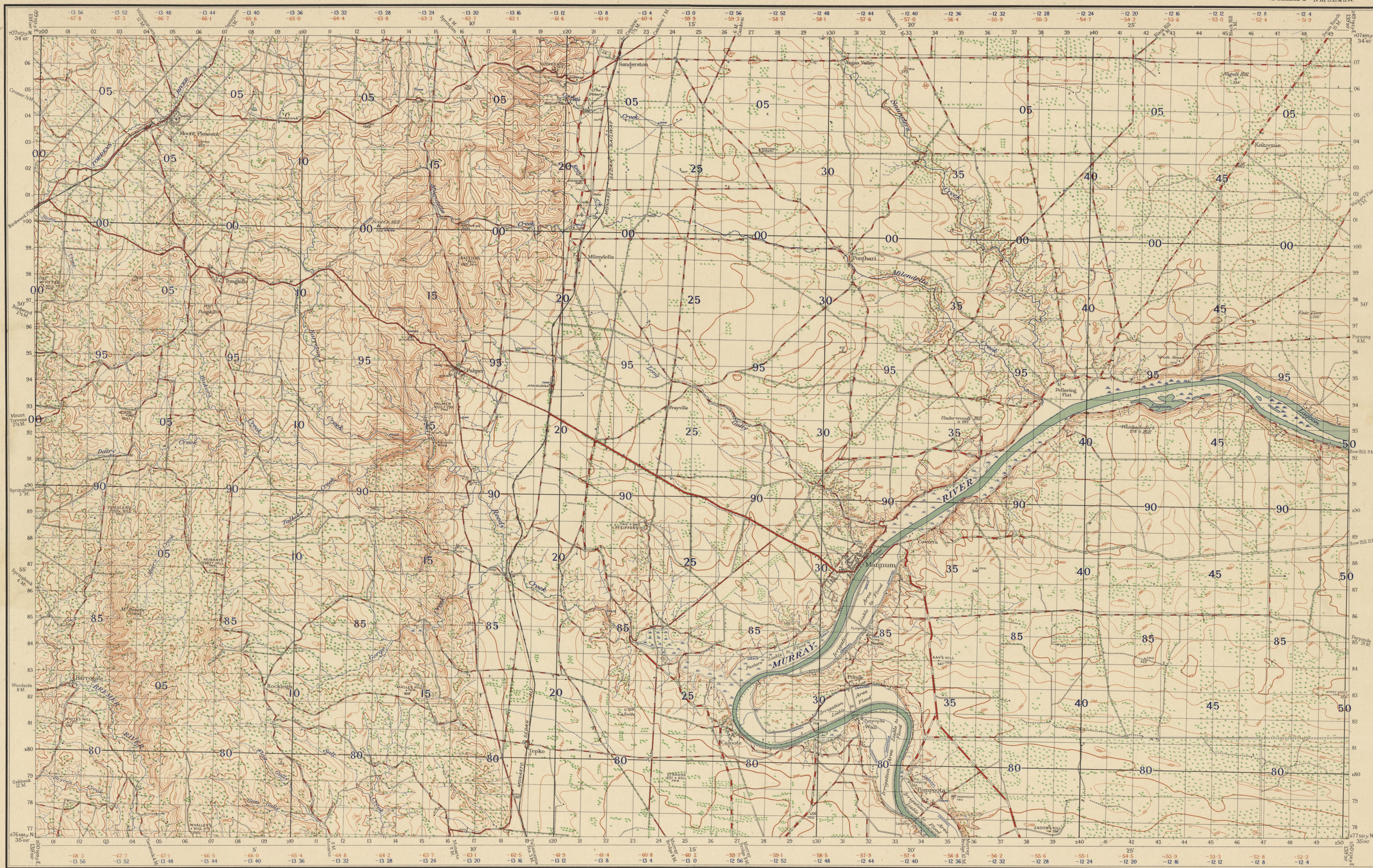


SOUTH AUSTRALIA MANNUM

No 811 ZONE 6
SHEET SOUTH 154
N.M.S.E. & S.W.

AUSTRALIA 1:63,360



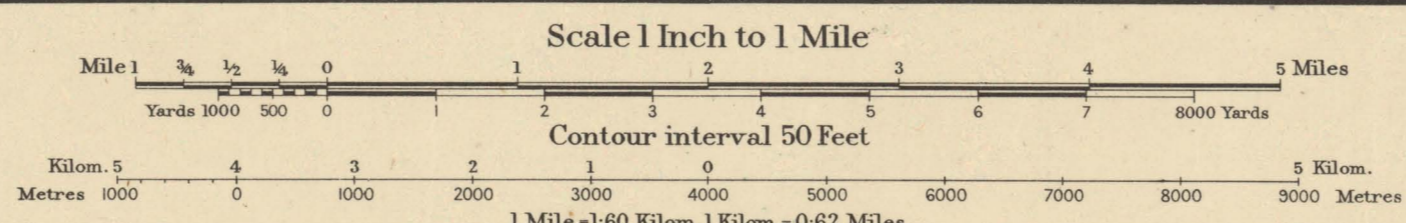
Prepared by Australian Section Imperial General Staff.

The framework of this Map depends entirely upon the First and Second Order Triangulation as carried out by the Australian Survey Corps. Elevations in feet; Mean Sea Level, Port Adelaide. Surveyed in 1837 by the Australian Survey Corps with aid of Air Photos by the Royal Australian Air Force.

Origin of Longitude: Sydney Observatory, 151° 12' 17.85"

Bridge (solid except where shown as masonry or iron)	
Culvert	
Water-hole	
Swamp or Marsh	
Creek	
Watercourse (non permanent)	
Water Channel	
Railway (double line)	
Railway (single line)	
Light railway	

Embankment	
Cutting	
Post Office	
Post & Telegraph Office (in villages)	
First Class Road	
Second Class Road	
Third Class Road	
Fourth Class Road	
Roads impassable to M.T. in bad weather	
Stone Wall	



INDEX TO ADJOINING SHEETS

GAWLER	CAMBRAI	SWAN REACH
ADELAIDE	MANNUM	GURNAMONT
ECHUNGA	MOBILONG	KARORNDIA

Peak	
House	
Garage	
School	
Hotel	
Blacksmiths Shop (Horse)	
Church	
Mill or Factory	
Lighthouse	
Telegraph or Telephone line	

Wind Pump	
Cemetery	
Timber	
Swath	
Trig Station	
Swamp	
Third	
Fourth	
Postum lines	
Contours	

TO GIVE A GRID REFERENCE ON THIS SHEET

Pay attention to the smaller co-ordinate figures at the corners and in margins. They are the true grid co-ordinates. PAY ATTENTION TO LARGER MARGINAL FIGURES AND TO THOSE PRINTED ON THE FACE OF THE MAP, viz. 2 1/2

POINT	SCOTT'S HILL	(TRIG)	
EAST	12	00	
NORTH	95	00	
Estimate tenth westwards	12.3	Estimate tenth northwards	95.0
REFERENCE 129001			
Unit	Yard		
Square	3000		
Reference to nearest	100		
Nearest similar reference distant	60 Miles		

By Authority: H.J. Green, Government Printer, Melbourne, 1939.

Crown Copyright Reserved

NOTE: The brown (convergence) and blue (time correction) figures within the borders of this map are for Artillery purposes.

Convergence based on Longitude 141 E