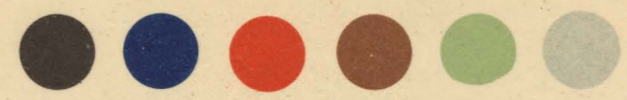
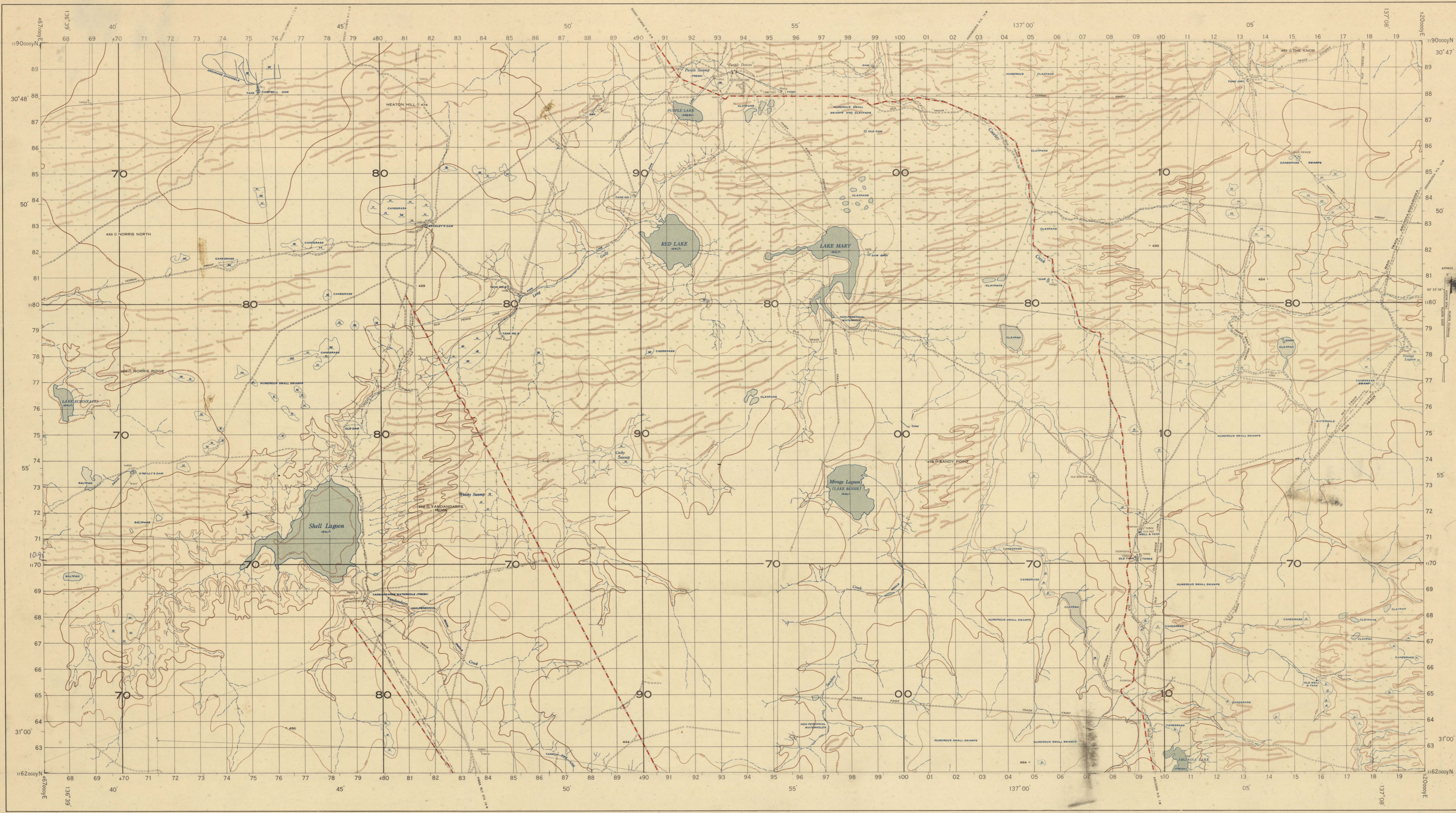


YANDANDARRE RIDGE

SOUTH AUSTRALIA

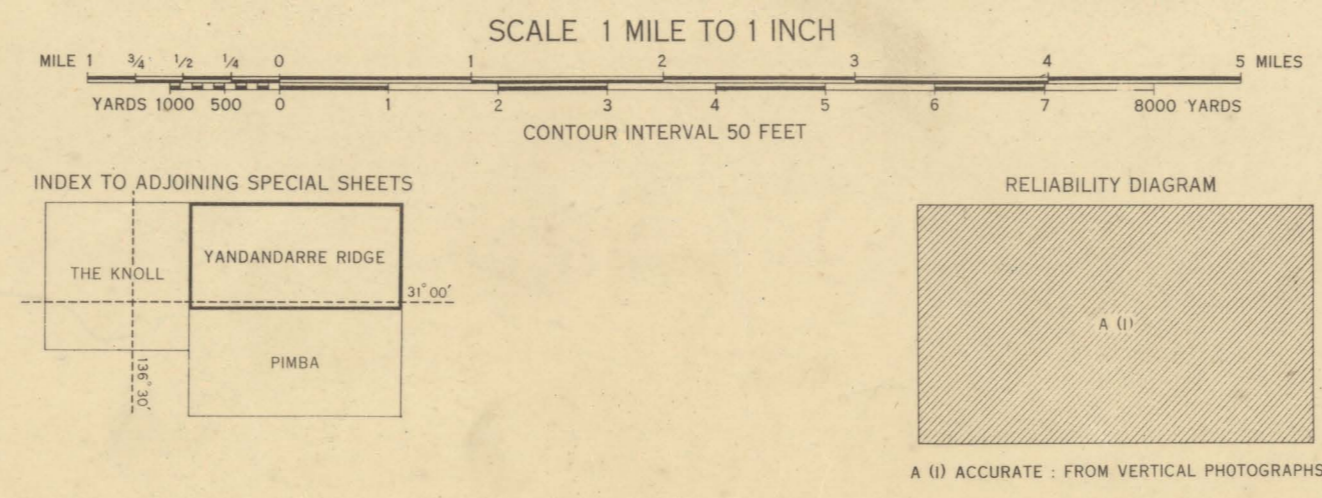


~~SECRET~~



CONTROL:
Traverse and Astronomical Fixations by the Royal Australian Survey Corps and State Lands Department Triangulation.
AIR PHOTOGRAPHY:
Survey Squadron, Royal Australian Air Force, Mission Number Survey 602, Woomera Area, 1949.
COMPILED BY:
The Royal Australian Survey Corps from ground surveys and air photographs 1950.
PROJECTION:
Transverse Mercator
ELEVATION:
Elevations in feet. Datum: Mean Sea Level
SECOND EDITION
PRODUCED BY ROYAL AUSTRALIAN SURVEY CORPS 1950

First class road	—————
Second class road	—————
Third class road	—————
Fourth class road	—————
Track vehicular	—————
Track foot or pack	—————
Bridge (road, except where shown as masonry, concrete or iron)	—————
Canal, concrete, gully or cattle grid	—————
Embankment, cutting	—————
Wind pump	—————
House, shed	—————
School, hotel, post office	—————
Church, cemetery	—————
Telegraph or telephone line, along road	—————
Electric transmission line, along road	—————
Vegetation	—————



Control Points:

Major	△ 803
Minor	○ 843
Permanent bench mark	■ 208
Spot height	• 828
Astronomical station	⊙
Quarry	⊙
Sand or gravel pit	⊙
Quay	⊙
Vermin proof fence	—————
Sand ridges	—————
Contours, depression contour	—————
Widecourse	—————
Ford	—————
Drain	—————
Dam	—————
Swamp or marsh	—————

subject to inundation permanently inundated

TO GIVE A GRID REFERENCE ON THIS SHEET

Pay attention to the smaller coordinate figures at the corners and to margins. They are for finding full coordinates.

PAY ATTENTION TO LARGER MARGINAL FIGURES AND TO THOSE PRINTED ON THE FACE OF THE MAP.

POINT		YANDANDARRE RIDGE	
East	North	East	North
81	72	818	722
REFERENCE 818722			

East 1000
North 1000
Nearest smaller reference figure 60 miles

YANDANDARRE RIDGE
(SPECIAL)

For Official Use Only

Crown Copyright Reserved