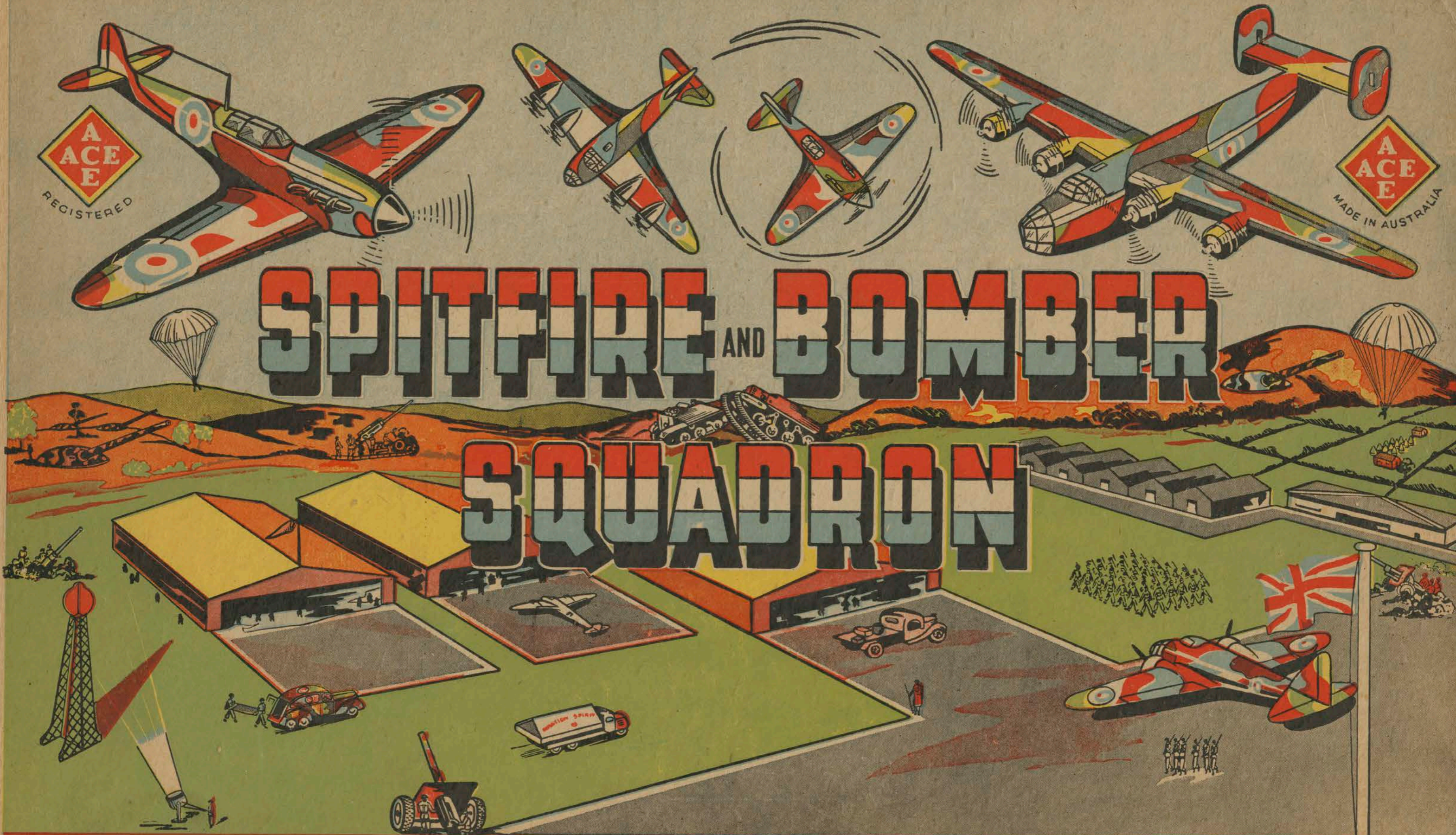


**A
ACE**
REGISTERED

**A
ACE**
MADE IN AUSTRALIA

SPITFIRE AND BOMBER

SQUADRON



CUT OUT, MODEL BUILDER • 6 SHEETS • NO GLUEING NECESSARY

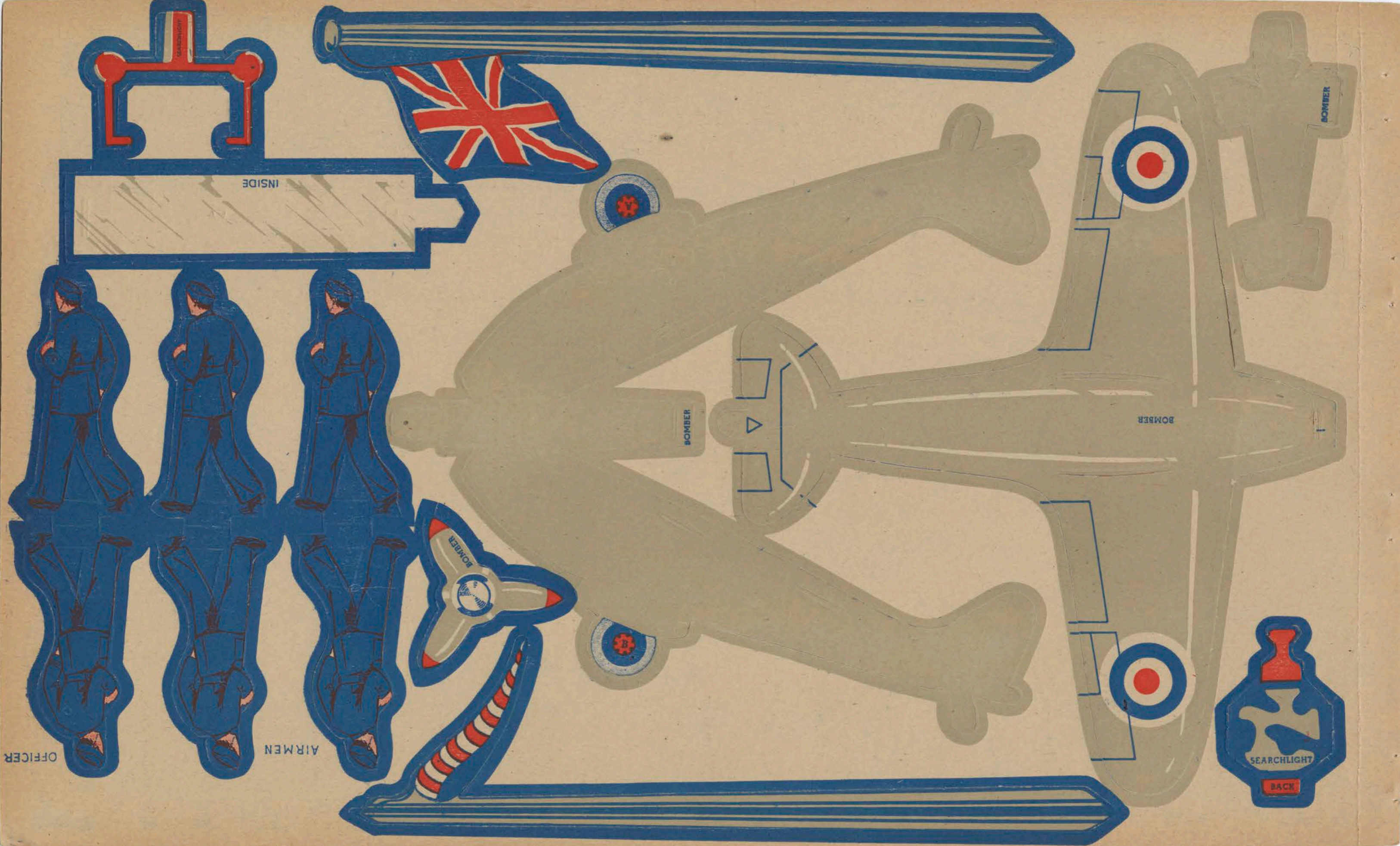
STATE LIBRARY OF S. AUST

CHILD LITERATURE
RESEARCH COLLECTION

Movable

SPI

044



INSIDE

AIR MEN

OFFICER

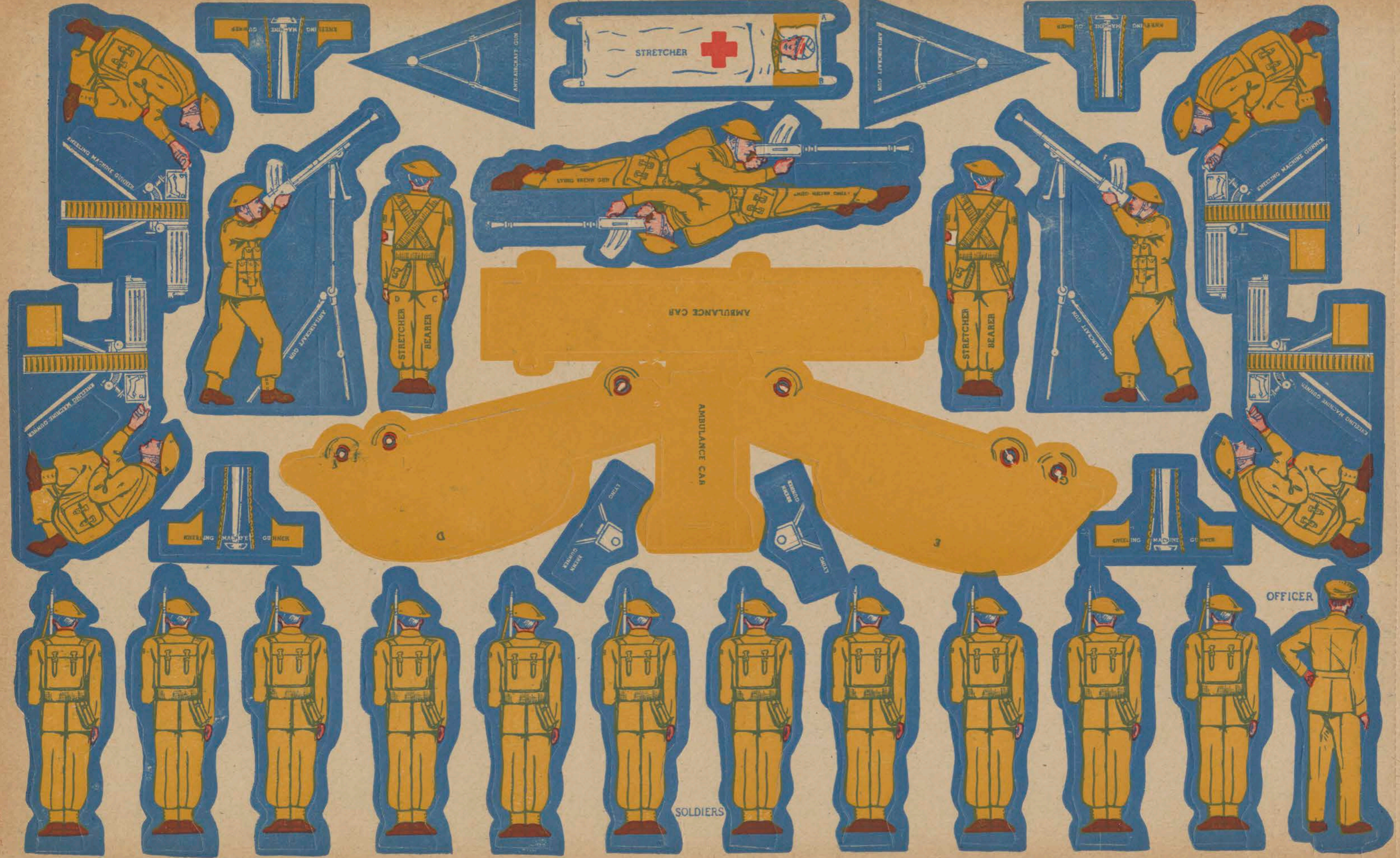
BOMBER

BOMBER

BOMBER

SEARCHLIGHT

BACK



STRETCHER

AMBULANCE CAR

AMBULANCE CAR

STRETCHER BEARER

STRETCHER BEARER

KNEELING MACHINE GUNNER

KNEELING MACHINE GUNNER

KNEELING MACHINE GUNNER

KNEELING MACHINE GUNNER

KNEELING MACHINE GUNNER

KNEELING MACHINE GUNNER

SOLDIERS

OFFICER

KNEELING MACHINE GUNNER

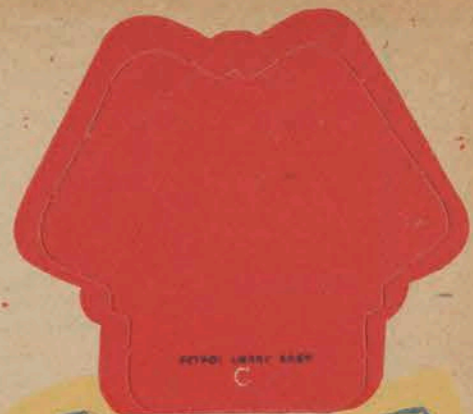
KNEELING MACHINE GUNNER

ANTI-AIRCRAFT GUN

ANTI-AIRCRAFT GUN

STRETCHER

STRETCHER



MECHANICS



PARACHUTISTS



PETROL LORRY
BACK



MECHANICS



PETROL LORRY



PETROL LORRY

PETROL LORRY
FRONT



PARACHUTISTS







SPITFIRE UNDER CARRIER

SPITFIRE UNDER CARRIER

SPITFIRE UNDER CARRIER

SPITFIRE

SPITFIRE

SPITFIRE

SPITFIRE

SPITFIRE

SPITFIRE



AIRMAN

OFFICER

SEARCHLIGHT LIGHT

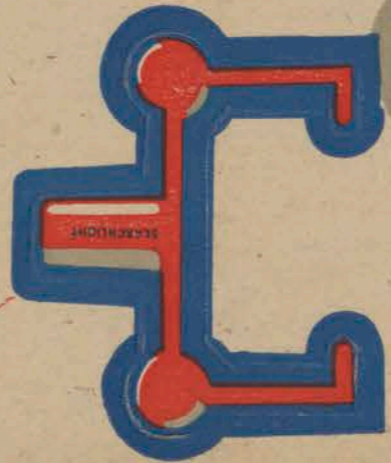
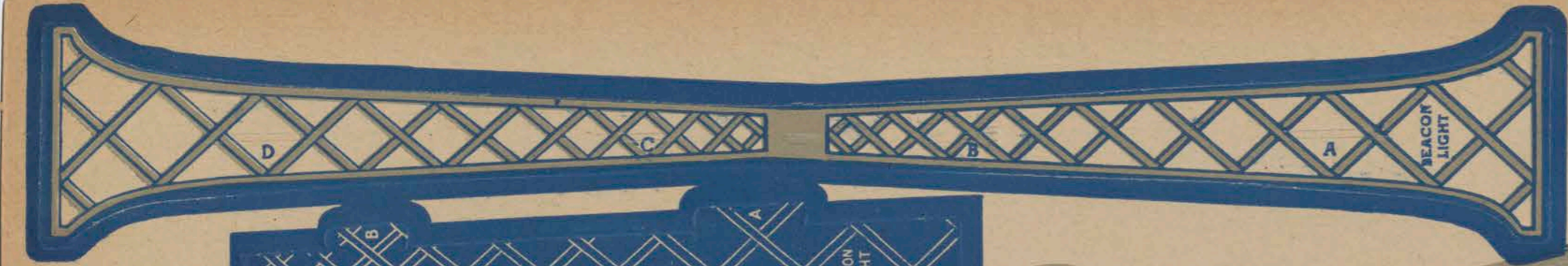
SEARCHLIGHT

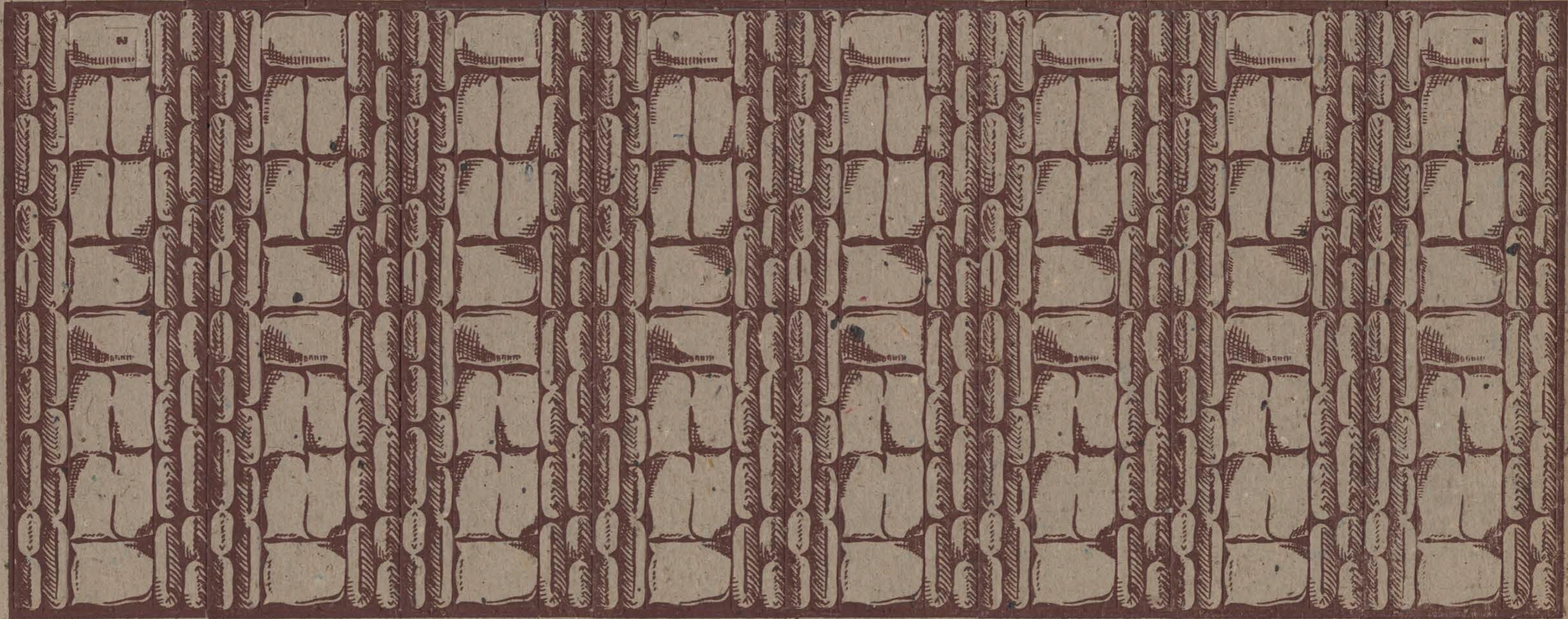
SEARCHLIGHT

SEARCHLIGHT

SEARCHLIGHT

SEARCHLIGHT





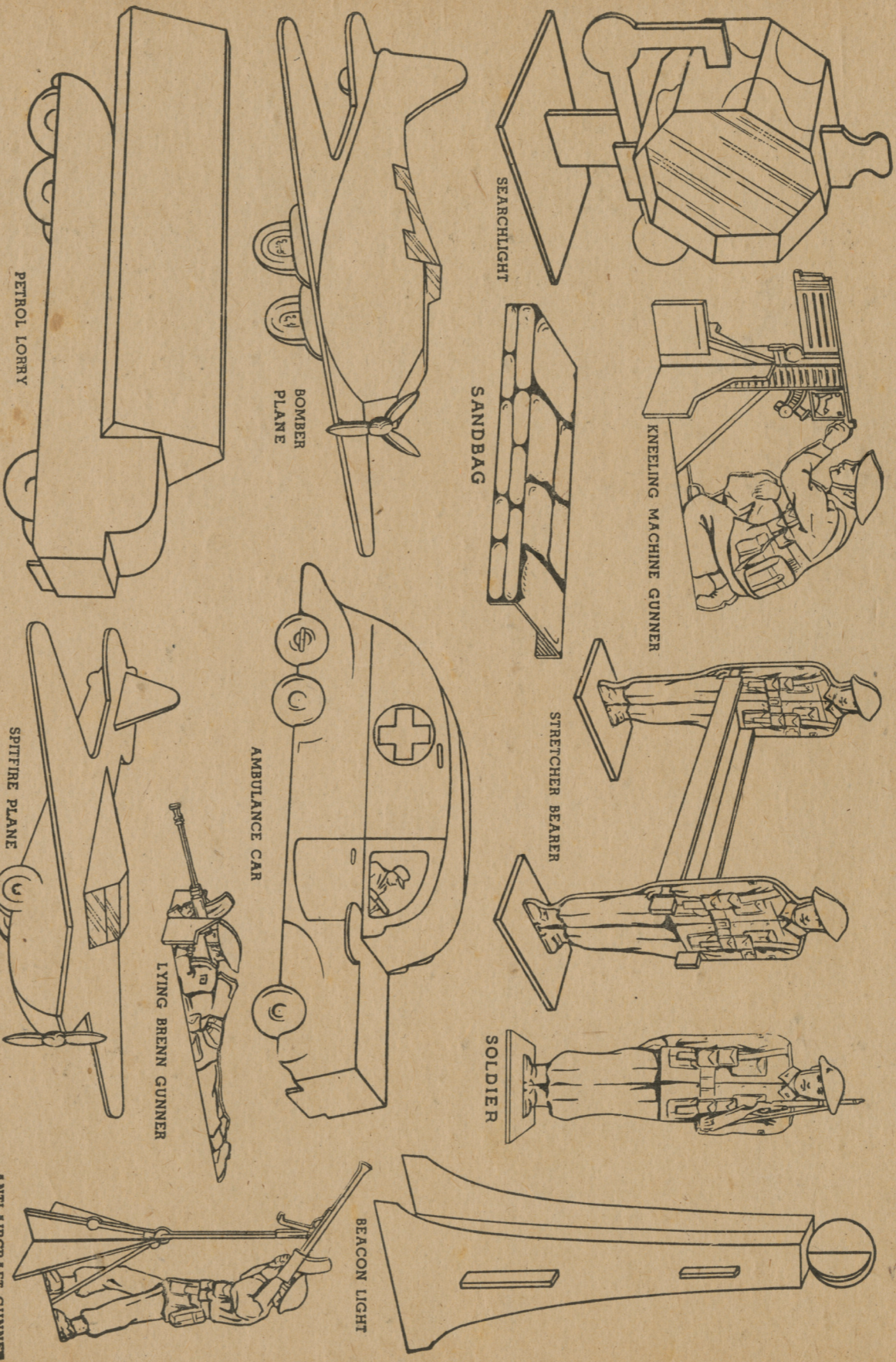


clrc
Moveable
SPI
c++
[1941?]

CONTENTS

When completely assembled, the contents will represent the following items:

Two Bomber Planes	One Wind Flag	One Stretcher
Three Spitfire Planes	One Beacon Light	Twelve Soldiers
One Petrol Lorry	Four Machine Gunners (kneeling)	Ten Parachutists
One Ambulance	Two Anti-Aircraft Gunners	Six Mechanics
Two Search-lights	Two Bren Gunners (lying)	Eight Sandbags
One Flag	Two Stretcher Bearers	Twelve Air Force Men



INSTRUCTIONS for ASSEMBLING SPITFIRE and BOMBER SQUADRON

All items are perforated and punched, and, taking one sheet at a time, the various illustrations should be pressed out by releasing the Holding Pieces around Cut-Out Lines. First assemble the AIRMEN, PARACHUTISTS, MECHANICS, SOLDIERS, STRETCHER BEARERS, BREN GUN, ANTI-AIRCRAFT GUN, and MACHINE GUNS, using the Stands made of heavy board. The items are MOUNTED ON THE STANDS by inserting the base fins into the Slots in the centre of the Stands. The SANDBAGS (from heavy cardboard sheet) should then be pressed out, and formed into the required shape by creasing along Scored Lines. Then press out the FLAG and WIND-FLAG, fold along Scored Lines, and insert into Slots marked Z specially provided on two of the Sandbags. This leaves the CONSTRUCTIONAL MODELS to be assembled.

PRESS OUT ONE ITEM AND COMPLETELY CONSTRUCT BEFORE CONTINUING TO PRESS OUT PARTS OF OTHER ACCESSORIES.

After the Cut-Out Pieces have been pressed out, each Piece must be folded along the Scored Lines. Then proceed to construct the models by inserting the Lugs marked with Alphabetical Letters into the Slots similarly marked. Lug A must be inserted into Slot A from the side on which the letter appears, Lug B into Slot B, and so on in Alphabetical Rotation, always making certain that the letters are in an upright position. **IT IS IMPORTANT TO WORK IN PROPER ALPHABETICAL ORDER.**

Inspect the illustrations shown above during course of construction.

All Accessories are very easily assembled if these directions are closely followed and proper Alphabetical Order is Maintained. When the Set is completely assembled, many interesting hours will be spent in manoeuvring the various Planes, Lorries, Soldiers, Airmen, etc., into action positions.